

Competition in unregulated environments: An inquiry into cryptocurrency firms

Avg. Monthly Volume (12mos, in billions USD)

- Binance ● OKX ● Coinbase / CB Pro ● KuCoin ● Huobi
- Kraken ● ByBit ● Binance US* ● MEXC Global* ● Gate.io
- Bitget* ● Upbit ● AscendEX* ● Crypto.com ● Bitfinex

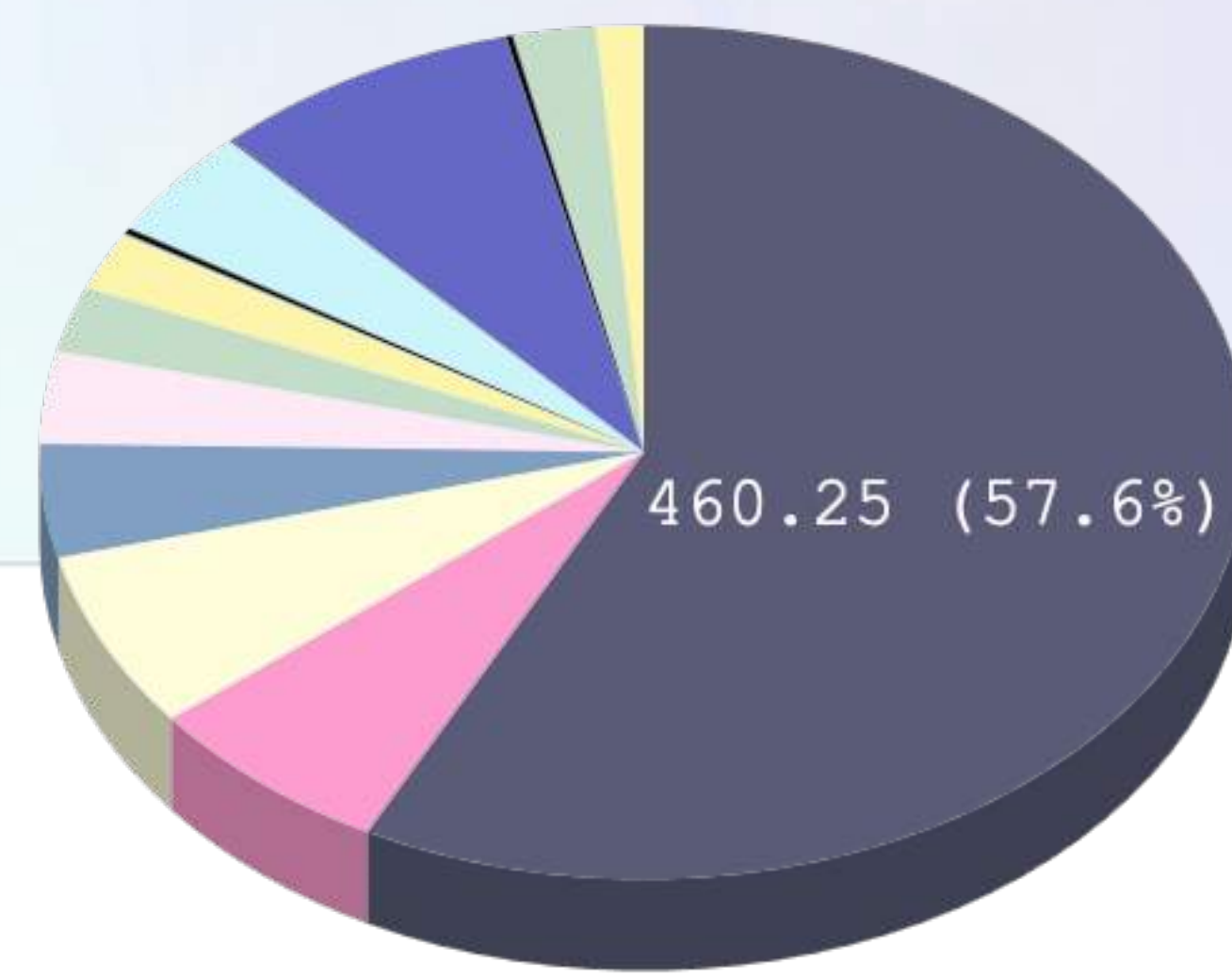


Figure 1

What causes this heavy domination by Binance?

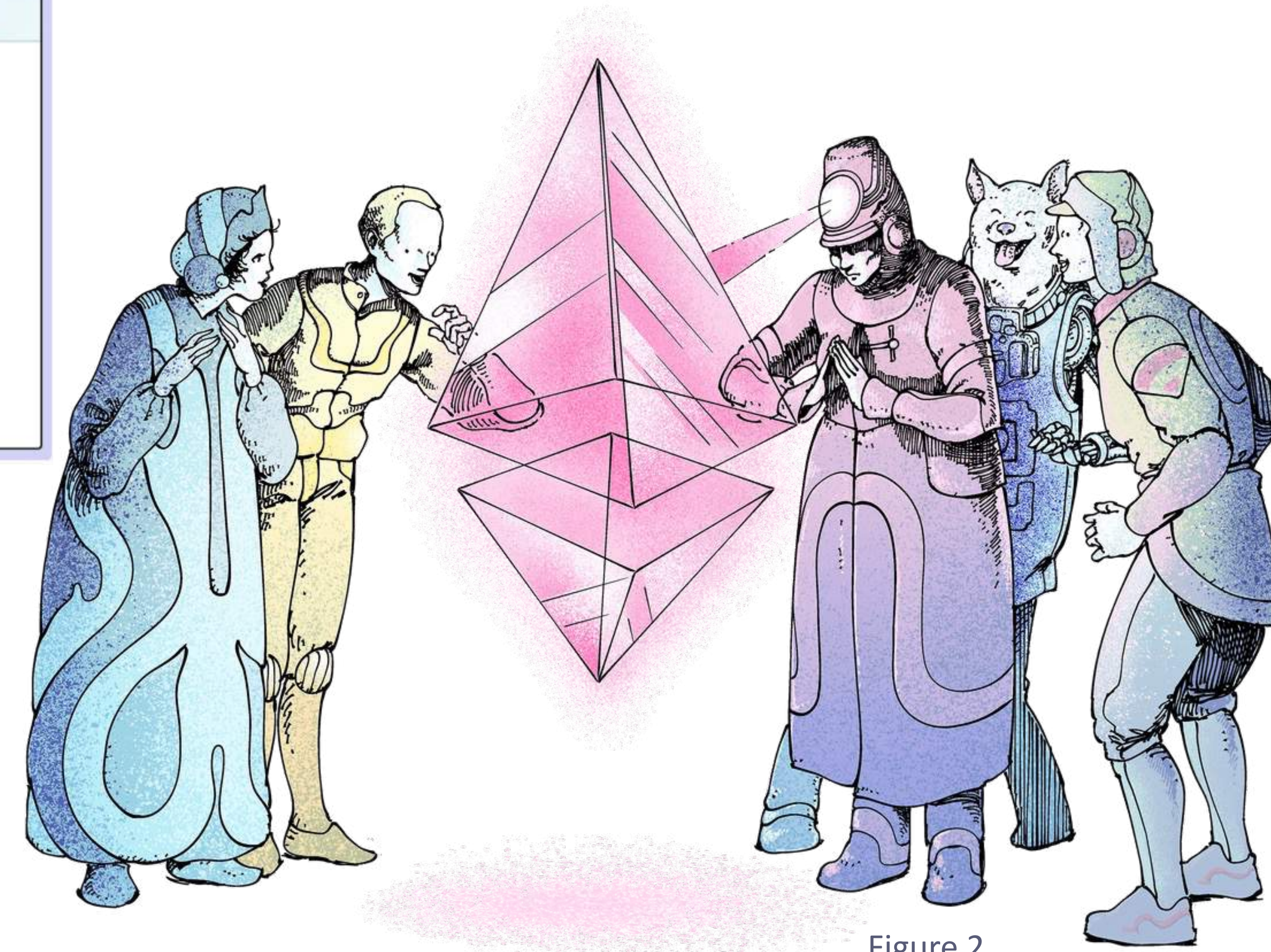


Figure 2

Remote working -- and learning -- is tough, I prefer in-person work.
 Gathering data is tedious and can often alter the research trajectory.

Grew more competent with many professional skills that are transferrable.
The factor that is most effective is likely twitter outreach and community (Binance).

Began developing ability to read academic papers.

Improved understanding of R and handling data.

Main Takeaways, Conclusions

This research was supported by the Valerie Kuehne Research Awards Internship Network, and was supervised by Dr Ke Xu, Department of Economics, University of Victoria.
 The author would like to thank Dr Lijun Zhang and Dr Elisabeth Gugl for the initial introduction to Dr Xu.

Acknowledgements

- Figure 1 - Hardy, Felix. Institutional Background Pie Chart, 2023.
 Figure 2 – unknown author, ethereum.org, licensed under Creative Commons BY 4.0.
 Figure 3 – Hardy, Felix. Institutional Background Plots, 2023.

References

Literature Review

- Thorough search and review of existing academic work on *similar* markets and situations. Looking for existing models relating to firm competition
- Hope to use these models as inspiration for developing ours
- For potential use in future by Dr Xu

Institutional Background

- Gathering data on the firms that may prove useful when developing a model
- Points gathered included years in business, number of product offerings, fee schedules, trust scores, and audits

Literature Review & Institutional Background



Figure 3

Learned R to run regressions using the data gathered.

The greater research plan would use very detailed data from Kaiko to explore relationships further.

(Left) Binance, as seen here, is a major outlier for all direct comparisons.

Creating a Model and Learning R