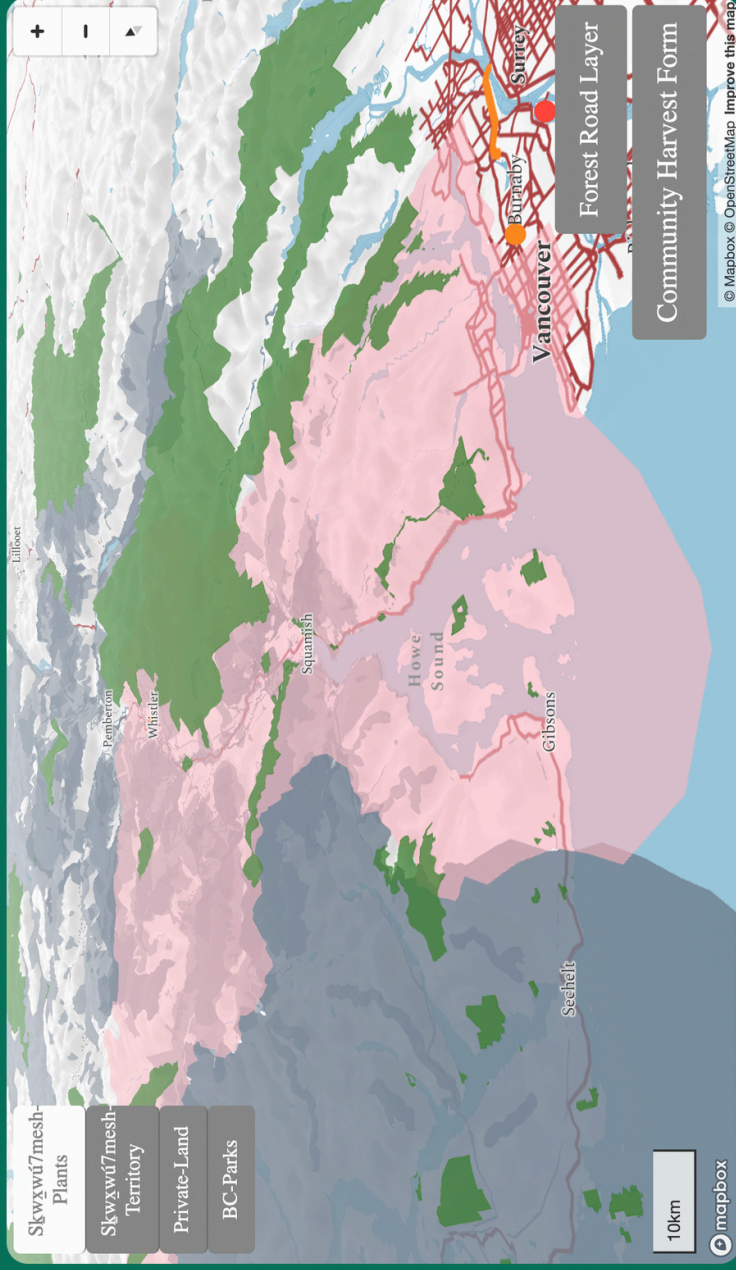


Barriers to Access in Skwxwú7mesh Territory and Beyond

Liz McCleary, Department of Geography, September 2024
Supervised by Dr. Noémie Boulanger-Lapointe

Map Features

The layers in this map were chosen based off of discussions with the Squamish Nation to visualize barriers to culturally important plant species. Each layer can be toggled on and off and display popups when clicked on.



Skwxwú7mesh Plants

The Skwxwú7mesh plant layer was generated from a non-exhaustive list of culturally important species by Elizabeth Ross and a number of iNaturalist observations. Each traditional name is credited to Leigh Joseph's Held by the Land (2023).



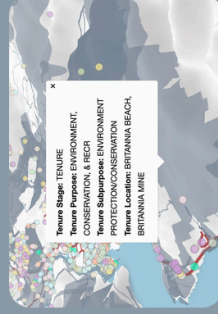
Skwxwú7mesh Territory

The Skwxwú7mesh Territory layer was generated from the Native Land API (2024).



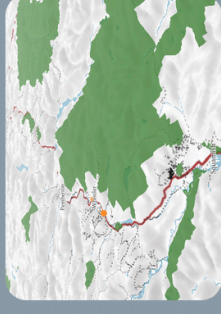
Private Land

The Private Land layer is displayed using a GeoJSON file from the BC Lands Branch (2014).



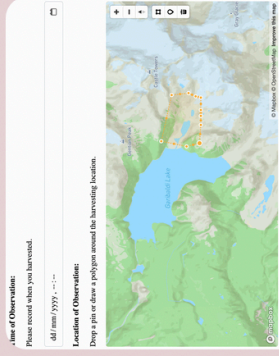
BC Parks Boundary

The BC Parks layer is generated from the BC Parks, Ecological Reserves, and Protected Areas dataset created by BC Parks and hosted on the BC Data Catalogue (2008).



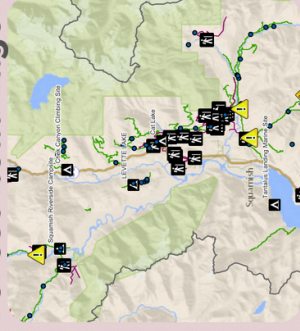
Community Harvest Form

Created using HTML, this survey form enables community members to share where and what they harvested on a given day. These recorded occurrences are stored and will be displayed on the map for fellow community members to see.



Forest Road Layer

Clicking on the Forest Road Layer button takes viewers to the BC Gov ArcGIS map displaying forest road closures and restrictions. This layer was created by BC Gov - Regional Operations South Coast (2021).



This research was supported by the Valerie Kuehne Undergraduate Research Awards, University of Victoria.

