

Objective

The scoping review aims to explore what is known about social prescribing and how it applies to populations experiencing forced migration. This research aims to identify current resources, highlight service gaps, and inform project mapping of community supports.



Research Question

What do we know about social prescribing for population groups who have experienced forced migration?



Secondary Research Questions

- What are the characteristics of social prescribing that have been reported in the literature to support people experiencing forced migration?
- What barriers and facilitators to social prescribing have been reported in the literature to support people experiencing forced migration?

Introduction: What is Social Prescribing

Social prescribing is an emerging approach that connects individuals to non-clinical, community-based supports intended to address the social determinants of health (Bickerdike et al., 2017; Husk et al., 2020; NHS England, 2019; World Health Organization, 2019). Referrals are typically facilitated by volunteers or community connectors, often called link workers, who help individuals access community programs and services.

What Do We Know?

Social prescribing has been effectively used to address loneliness, social isolation, and barriers to social support. In Canada, social prescribing initiatives have been largely oriented toward reducing isolation among older adults and supporting community engagement for seniors (Alliance for Healthier Communities, 2020).

What are the Gaps?

Research to date is largely concentrated in the United Kingdom and focused on older adults and individuals with chronic conditions (Percival et al., 2022), while refugee populations remain largely absent from this literature. Thus, there is a gap in understanding how social prescribing might function as a coordinated intervention for individuals who have experienced forced migration.

Inclusion criteria (JBI PCC Framework)

Participants

Individuals who have experienced forced migration, including refugees, asylum seekers, displaced persons, and other migrants compelled to leave their country of origin.

Concept

Social prescribing to support persons who have experienced forced migration. Social prescribing is an approach that healthcare professionals use to address the social, emotional, and practical needs of individuals through referrals to community-based activities and services, rather than focusing only on physical concerns.

Context

Studies from any geographical location and healthcare or community setting.

Sources

Including: Quantitative, qualitative, and mixed methods designs, systematic reviews, thesis and dissertations, government policies and reports.

JBI Resources



Excluding: Book chapters and conference abstracts.

Methodology

This scoping review follows the structure of the JBI methodology. It is part of a Partnership Engagement Grant (PEG) with MOSAIC which includes the development of a toolkit and participant interviews with refugee men.

Focus group interviews with social prescribers in three different health centers (REACH, UMBRELLA and MOSAIC) are also used to inform our scoping review.

Sources

Databases used: Medline (Ovid), CINAHL (EBSCOhost), PsycINFO (APA and EBSCOhost), Web of Science Core Collection (Clarivate), ProQuest Dissertations & Theses (EBSCOhost)

Grey Literature: Google Scholar, Google, and select websites of key NGOs, government agencies, and academic centers

Data selection

- Stage 1: Screen titles and abstracts
- Stage 2: Screen full texts of records included from stage 1

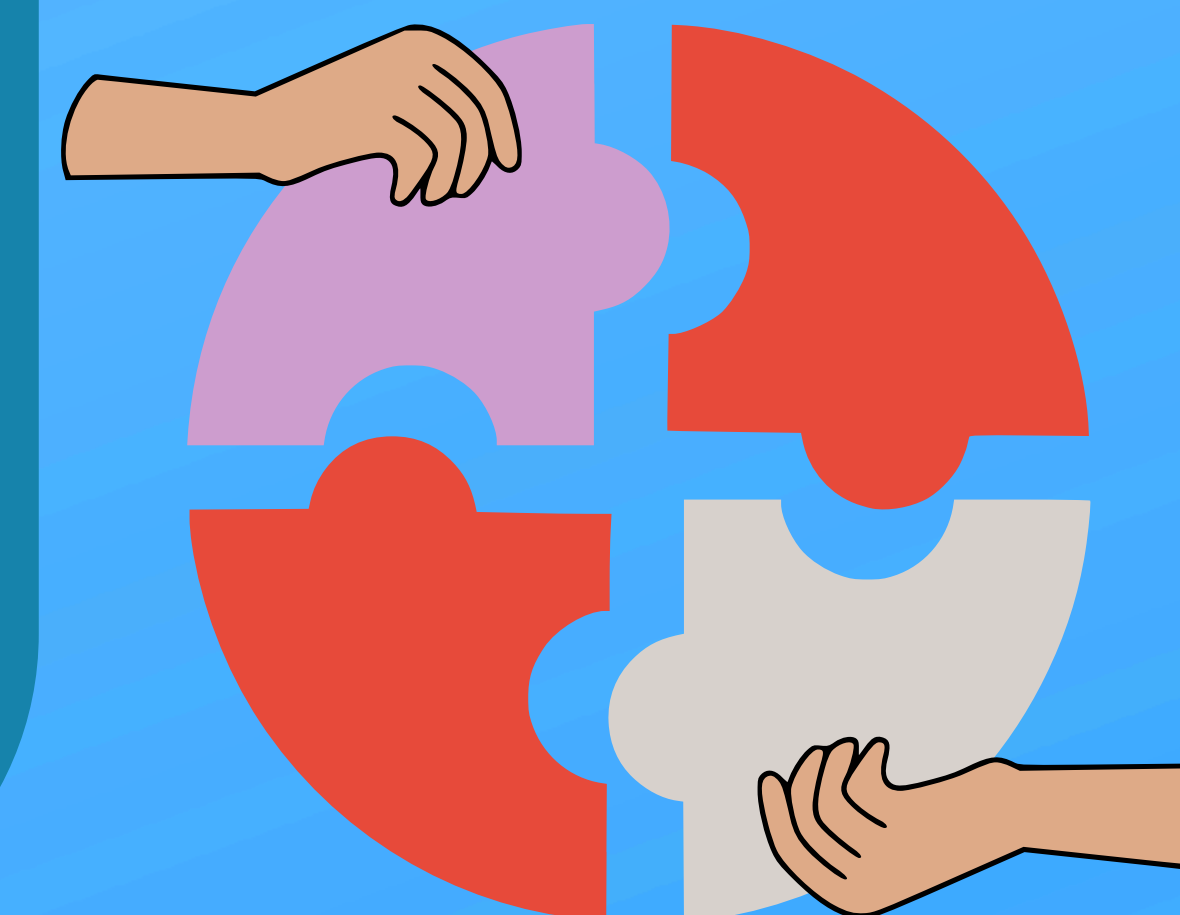
Each stage will be completed by two independent reviewers. Duplications will be removed by Covidence and manually during screening if missed by Covidence.

Data Processing

- Extraction will be done by two independent reviewers.
- Extracted data will be coded, grouped into categories, and analyzed for common themes.
- Findings will be summarized using frequencies and counts and described narratively.

Knowledge Mobilization

- Publication of the scoping review.
- Community gathering with social prescribers and MOSAIC.
- Toolkit development for social prescribers



Acknowledgements

This research was supported by the Jamie Cassels Undergraduate Research Awards, University of Victoria. It was funded by the SSHRC in partnership with UVIC and MOSAIC. The project supervisor is Dr. Nancy Clark. Contributor: Jessica MusseLl. Distance Learning and Research Librarian, Liaison to the Schools of Child & Youth Care, Nursing, Social Work, and Health Information Science, University of Victoria

References

- Bickerdike, L., Booth, A., Wilson, P. M., Farley, K., & Wright, K. (2017). Social prescribing: Less rhetoric and more reality. A systematic review of the evidence. *BMJ Open*, 7(4), e013384. <https://doi.org/10.1136/bmjopen-2016-013384>
- Husk, K., Blockley, K., Lovell, R., Bethel, A., Bloomfield, D., Warber, S., Pearson, M., & Lang, I. (2020). What approaches to social prescribing work, for whom, and in what circumstances? A realist review. *Health & Social Care in the Community*, 28(2), 309–324. <https://doi.org/10.1111/hsc.12839>
- NHS England. (2019). The NHS Long Term Plan. NHS England.
- World Health Organization. (2019). WHO global strategy on integrated people-centred health services 2016–2026.
- Alliance for Healthier Communities. (2020). *Rx: Community-Social prescribing in Ontario: A guide to implementation*. Alliance for Healthier Communities.
- Percival, A., Cottrell, E., Gaziano, C., & Agarwal, G. (2022). Systematic review of social prescribing and older adults: where to from here? *Family Medicine and Community Health*, 10(Suppl 1), e001829.