

NETOLNEW: ABOUT OUR PROJECT

Onowa McIvor & Peter Jacobs

2018

Faculty of Education

Faculty Publications

© 2018 Onowa McIvor & Peter Jacobs. This is an open access article distributed under the terms of the Creative Commons Attribution-NonCommercial-ShareAlike License CC BY-NC-SA: <https://creativecommons.org/licenses/by-nc-sa/4.0/>

Original citation:

McIvor, O. & Jacobs, P. (2018). NETOLNEW_ - About our project.
https://netolnew.ca/wp-content/uploads/2019/04/NETOLNEW-About-Project_FINAL.pdf

Downloaded from UVicSpace Research & Learning Repository
dspace.library.uvic.ca



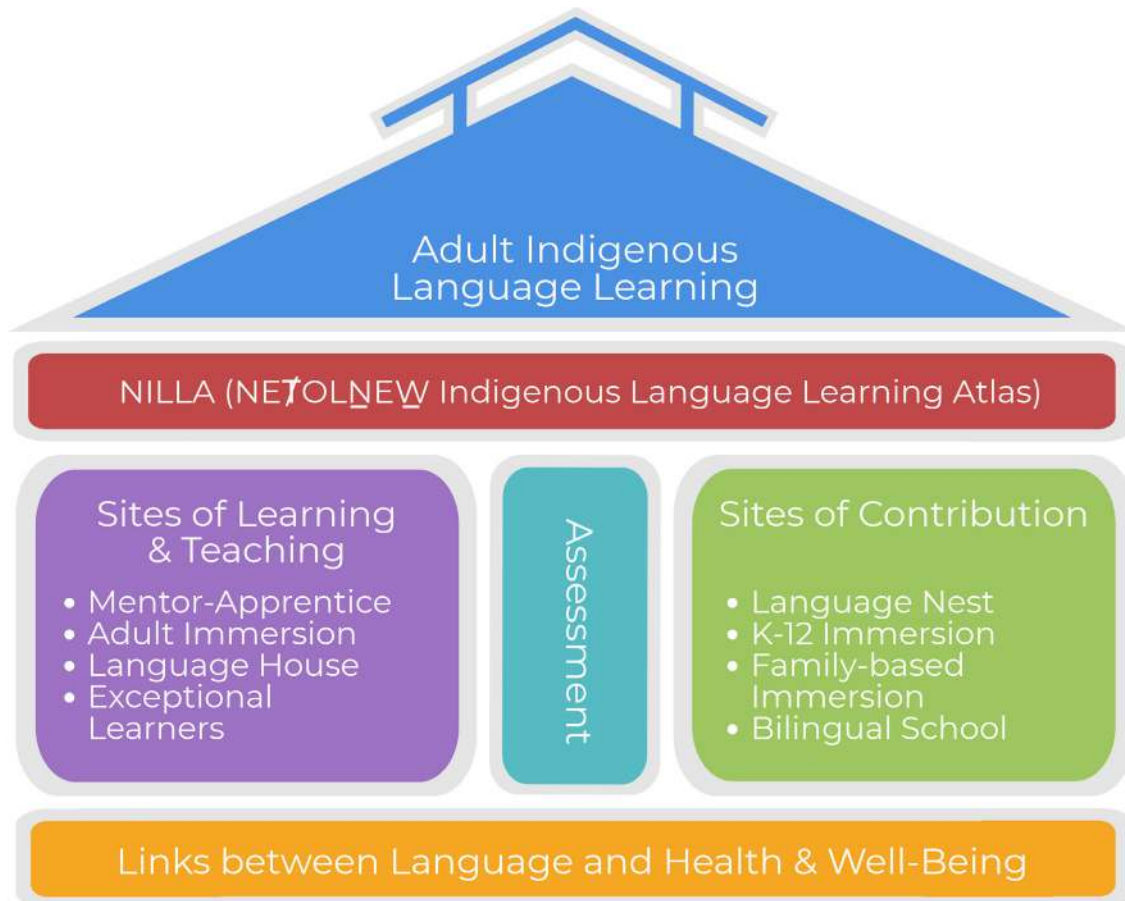
**University
of Victoria**

Libraries

ONE mind · ONE people

NETOLNEW

Working to understand and enhance Indigenous adults' contributions to reviving Indigenous languages in Canada



NETOLNEW (translated as “one mind, one people” or “doing things as one” in the SENĆOŦEN language) is the central principle of this community-university research partnership.

Indigenous communities across Canada are doing great - and much needed - language revitalization and maintenance work.

Increasingly, adults have been identified as the “missing generation” of learners who hold great potential to contribute to the revival of Indigenous languages in Canada by acting as the middle ground between Elders, children and youth within their communities.

However, we know that language learning at any age does not happen in isolation.

It is within this context that our Partnership addresses Indigenous adult language learning. We use an approach that engages with, and studies, the spheres in which these adult learners both learn contribute.

These include five overlapping “sites” where Indigenous adults learn their language as well as pass it on to others, organized into five themes in our NETOLNEW Indigenous Language Research Network “house” (above).

September 2018



University of Victoria

© Drs. Onowa McIvor and Peter Jacobs
University of Victoria, Canada - WSÁNEĆ and Lekwungen territories
LEARN MORE AT www.netolnew.ca
FOLLOW US @netolnew



Social Sciences and Humanities
Research Council of Canada

Conseil de recherches en
sciences humaines du Canada

Canada

Current Partnership Research

NILLA (NETOLNEW Indigenous Language Learning Atlas)

NILLA will create a national in scope, virtual, online gathering space for Indigenous language communities and organizations to access and share initiatives, resources, learning and teaching successes.

Communities focusing on language learning initiatives and organizations (small or large) supporting language work can get involved with NILLA now: www.netolnew.ca/nilla.



TSI TYÓNNEHT ONKWAWÉN:NA- Tyendingaga Territory, ON



Using first language speakers' oral language recordings as a learning tool for adult second language learners

WSÁNEĆ SCHOOL BOARD- Brentwood Bay, BC

Translating the NETOLNEW language assessment tool into SENĆOŦEN and structuring a SENĆOŦEN grammar system similar to the Root Word Method



DEHCHO FIRST NATIONS- Fort Simpson, NWT



Researching Mentor-Apprentice Program (MAP) models



University of Victoria

© Drs. Onowa McIvor and Peter Jacobs
University of Victoria, Canada - WSÁNEĆ and Lekwungen territories
LEARN MORE AT www.netolnew.ca
FOLLOW US @netolnew



Social Sciences and Humanities
Research Council of Canada

Conseil de recherches en
sciences humaines du Canada

Canada