

Defining renewable groundwater use and its relevance to sustainable groundwater management

M. O. Cuthbert, Tom Gleeson, M. F. P. Bierkens, G. Ferguson, & R. G. Taylor

2023

Faculty of Science

Faculty of Engineering and Computer Science

Faculty Publications

© Cuthbert, Gleeson, Bierkens, Ferguson, & Taylor. This is an open access article distributed under the terms of the Creative Commons CC BY 4.0 License: <http://creativecommons.org/licenses/by/4.0/>.

Original citation:

Cuthbert, M. O., Gleeson, T., Bierkens, M. F. P., Ferguson, G., & Taylor, R. G. (2023). Defining renewable groundwater use and its relevance to sustainable groundwater management. *Water Resources Research*, 59(9).
<https://doi.org/10.1029/2022wr032831>

Downloaded from UVicSpace Research & Learning Repository

dspace.library.uvic.ca



University
of Victoria

Libraries

Water Resources Research®



COMMENTARY

10.1029/2022WR032831

Defining Renewable Groundwater Use and Its Relevance to Sustainable Groundwater Management

M. O. Cuthbert^{1,2} , T. Gleeson³ , M. F. P. Bierkens^{4,5} , G. Ferguson^{6,7,8} , and R. G. Taylor⁹ 

Key Points:

- A groundwater system cannot be renewable or non-renewable in and of itself, but only with reference to how the groundwater is being used
- Renewable groundwater use allows for dynamically stable re-equilibrium of groundwater levels and quality on human timescales
- We propose to separate physically robust definitions of renewable groundwater use from the inherently value-based language of sustainability

Correspondence to:

M. O. Cuthbert,
cuthbertm2@cardiff.ac.uk

Citation:

Cuthbert, M. O., Gleeson, T., Bierkens, M. F. P., Ferguson, G., & Taylor, R. G. (2023). Defining renewable groundwater use and its relevance to sustainable groundwater management. *Water Resources Research*, 59, e2022WR032831. <https://doi.org/10.1029/2022WR032831>

Received 17 MAY 2022
Accepted 15 AUG 2023

Author Contributions:

Conceptualization: M. O. Cuthbert, T. Gleeson, M. F. P. Bierkens, G. Ferguson, R. G. Taylor
Methodology: M. O. Cuthbert, T. Gleeson, M. F. P. Bierkens, G. Ferguson, R. G. Taylor
Visualization: M. O. Cuthbert
Writing – original draft: M. O. Cuthbert
Writing – review & editing: M. O. Cuthbert, T. Gleeson, M. F. P. Bierkens, G. Ferguson, R. G. Taylor

¹School of Earth and Environmental Sciences, Cardiff University, Cardiff, UK, ²School of Civil and Environmental Engineering, The University of New South Wales, Sydney, Australia, ³Department of Civil Engineering and School of Earth and Ocean Science, University of Victoria, Victoria, BC, Canada, ⁴Department of Physical Geography, Utrecht University, Utrecht, The Netherlands, ⁵Deltares, Unit Soil and Groundwater Systems, Utrecht, The Netherlands, ⁶Department of Civil, Geological and Environmental Engineering, University of Saskatchewan, Saskatoon, SK, Canada, ⁷Global Institute for Water Security, University of Saskatchewan, Saskatoon, SK, Canada, ⁸Hydrology and Atmospheric Sciences, University of Arizona, Tucson, AZ, USA, ⁹Department of Geography, University College London, London, UK

Abstract Groundwater systems are commonly defined as renewable or non-renewable based on natural fluxes of recharge or on estimates of aquifer storage and groundwater residence time. However, we show here that the principle of capture (i.e., how recharge and discharge change due to pumping) challenges simple definitions so that a groundwater system cannot be renewable or non-renewable in and of itself, but only with reference to how the groundwater is being used. We develop and propose more hydraulically informed definitions for flux-renewable and storage-renewable groundwater use, and a combined definition that encompasses both the flux-based and storage-based perspectives such that: *renewable groundwater use allows for dynamically stable re-equilibrium of groundwater levels and quality on human timescales*. Further, we show how a matrix of combinations of (a) the ratio of pumping rate to the maximum rate of capture along with (b) the response or recovery timescales implicit in this definition, leads to a useful four-quadrant framework for characterizing groundwater use, illustrated using case studies from aquifers around the world. Renewable groundwater use may inform pathways to groundwater sustainability, which encompasses a broader set of dimensions (e.g., socio-political, economic, ecological and cultural) beyond the scope of groundwater science. We propose that separating physically robust definitions of renewable groundwater use from the inherently value-based language of sustainability, can help bring much needed clarity to wider discussions about sustainable groundwater management strategies, and the role of groundwater science and scientists in such endeavors.

1. Motivation

As the largest store of accessible freshwater on Earth, groundwater is under increasing pressure as a resource since it supplies a large proportion of irrigated agriculture worldwide and is the source of drinking water for around 2 billion people (Famiglietti, 2014). Over-abstraction of groundwater can harm groundwater-dependent ecosystems and cause groundwater salinization, increased frequency and severity of hydrological drought, land subsidence, and sea-level rise (Bierkens & Wada, 2019). Clear conceptual thinking and robust quantification of groundwater management options are necessary precursors, among other considerations, to inform sustainable groundwater use. However, it is increasingly clear that existing definitions and metrics of large-scale groundwater use are inconsistent and confusing which can undermine this goal (Ferguson et al., 2020; Gleeson et al., 2020).

There has been much deliberation in the literature on the issue of groundwater sustainability (for a comprehensive review see Mace (2022)). However, there have been noticeably fewer attempts to articulate what renewability means in the context of groundwater resources. Since Wood (2001) proposed “that we recast the value-laden sustainability concept as “renewability” and address this better-constrained concept in scientific terms”, we are unaware of any attempt to rigorously do so. Here we therefore aim to define more clearly the notion of renewable groundwater use from a groundwater science perspective, and how this concept relates to the distinct, albeit related, notion of groundwater sustainability. This is not just a semantic exercise: identifying paths toward robust groundwater management depends on defining clear goals, and recent research has shown how a clarification of terms is important to resolve existing inconsistency and confusion among other scientists, managers, policy makers and stakeholders (Mace, 2022; Rudestam & Langridge, 2014).

© 2023. The Authors.

This is an open access article under the terms of the [Creative Commons Attribution License](https://creativecommons.org/licenses/by/4.0/), which permits use, distribution and reproduction in any medium, provided the original work is properly cited.

To begin, we address the question of whether groundwater is in fact a renewable resource and use a simple thought experiment to propose new definitions of renewable groundwater use. We then show how this leads naturally to a four-quadrant framework for characterizing groundwater resource use that is illustrated with reference to case studies from aquifers around the world. Finally, we discuss how renewable groundwater use fits within a broader understanding of groundwater sustainability and how the quadrant framework presents challenges and opportunities for further developments to map groundwater management pathways.

2. Is Groundwater a Renewable Resource?

We first question whether the common assumption that groundwater is a renewable resource is a sound one. It is instructive to begin by considering how a “renewable resource” can be defined in more general terms as:

“A natural resource (such as fresh water, a forest, or renewable energy) that is replaced at a rate which is at least as fast as it is used, which has the ability to renew itself and be harvested indefinitely under the right conditions, but which can be converted into a non-renewable resource if subject to overexploitation.”
(Park & Allaby, 2017)

Hidden in a general definition of renewable natural resources such as this, is an implicit amalgamation of two distinct modes of resource use. First, there is the direct capture or abstraction of a *flux* of energy or matter. For example, this is the case for solar or wind energy which, while they may be used in conjunction with energy storage devices, essentially exploit the flux of photons or wind and convert them to other forms of useable energy at the point of capture. Renewability of some surface water resources can also be conceived in this “flux-based” way, for instance where the capture of streamflow flux is used directly (e.g., for irrigation) or stored artificially for later use (e.g., in a reservoir). In contrast, other natural resources have a much greater propensity for natural *storage*, and it is predominantly the “stock” of the resource which is allowed to accumulate and then be harvested or abstracted for human use. For example, such “storage-based” definitions of renewability may be applicable in this way to forestry or fisheries, or large-volume surface water bodies such as natural lakes.

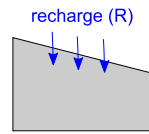
Groundwater flows, albeit slowly, but the recharge fluxes involved cannot be captured directly as for other “flux-based” natural resources, aside from at locations of natural springs. Rather, groundwater must be pumped out of the ground at discrete points in a landscape via wells which are often very expensive to drill and maintain. The infrastructure required for the abstraction of groundwater is immobile (e.g., in comparison to forestry or fishery harvesting), but groundwater is “captured” from areas well away from the locations of the abstractions themselves. Furthermore, as we elaborate further below, the timescales of groundwater storage depletion are not solely determined by the rate of use and can span several orders of magnitude. Hence, groundwater does not easily fit into either a flux-based or storage-based categorization as used for other types of resources. As a consequence, renewable groundwater has therefore previously been defined in several contradictory ways that are discussed below and are summarized in Figure 1.

As outlined in detail by Gleeson et al., 2020, flux-based definitions equate renewable groundwater with the rate of (pre-pumping) natural recharge (Döll & Fiedler, 2008; Wada et al., 2010). This is a potentially useful, conservative and clear definition but will be inevitably incorrect, equating to the minimum likely capture, unless it includes the principle of increased recharge occurring during capture (Lohman, 1972; Theis, 1940). These principles are outlined in detail in the next section since capture is a fundamental process to include in considerations of groundwater renewability. Flux-based definitions of renewable groundwater are convenient for integrated water resources management since they are readily combined with renewable surface water resources which are almost always defined using streamflows (Alcamo et al., 2003; Vörösmarty et al., 2000). However, when combined, they must not be double counted, and the overlaps between internally generated recharge and streamflow must be carefully accounted for (Food and Agriculture Organization of the United Nations, 2003).

Storage-based approaches, on the other hand, define renewable or non-renewable groundwater using a threshold value of mean renewal time, normally defined as the ratio of groundwater storage (V in Figure 1) to the (pre-pumping) recharge rate (R in Figure 1) (Margat et al., 2006). Again, in this definition, the principle of capture is often ignored but, more problematically, the logic of defining renewability in this way may be questionable from a hydraulic perspective. For example, it implies that groundwater in a larger aquifer receiving the same recharge flux as a smaller aquifer is inherently less renewable. This appeals to the commonly held

Existing definitions of renewable groundwater:

1. Flux based: renewable groundwater = recharge

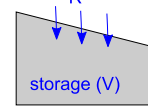


(e.g. FAO 2003)

Problems:

- Ignores capture
- Ignores storage renewal timeframe

2. Storage based: renewable if 'mean renewal time' ($=V/R$) < e.g. 100 years

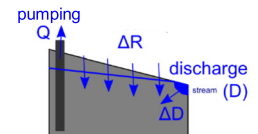


(e.g. Margat et al. 2006)

Problems:

- Ignores capture
- Considers renewal time of whole aquifer not just the 'depleted' fraction

3. Groundwater fully captured on human timescales



(e.g. Gleeson et al. 2020)

Problems:

- Focuses on resource not the user
- Only includes groundwater 'quantity' considerations

We propose that:

Renewable groundwater use allows for dynamically stable re-equilibrium of groundwater levels and quality on human timescales

Figure 1. Evolving definitions of groundwater renewability. We develop our proposed definition in Section 4 below. Parameters are all defined briefly in the figure and in more detail in Section 3. See FAO (2003), Margat et al. (2006), and Gleeson et al. (2020) for more detail of each definition, and the text for more description of the problems we perceive with each definition.

perception that older groundwater may be less renewable, but as has been outlined elsewhere, this is not a coherent position (Ferguson et al., 2020).

The United Nations Food and Agricultural Organization (FAO) take the view that “*While renewable water resources are expressed in flows, non-renewable water resources have to be expressed in quantity (stock)*” (FAO, 2003). Irrespective of the relative merit or coherence of the flux and storage-based definitions, the two definitions are inconsistent with each other since each implicitly excludes the other: that is, for a given value of recharge which defines a given aquifer's renewable use in flux terms, an aquifer could be designated as non-renewable under a storage-based definition if its volume of stored groundwater is sufficiently large (Figure 1). Gleeson et al. (2020) attempted to harmonize the flux-based and storage-based definitions defining renewable groundwater as: “any groundwater that can be dynamically captured during pumping that leads to a new dynamically stable equilibrium in groundwater levels within human timescales (~100 years)”. However, in this definition renewable groundwater is still seen as a property of the resource itself, rather than explicitly its relationship to its use (e.g., Taylor, 2009), a point we return to later when we propose a new definition. Also, it does not include any considerations beyond the water balance.

In summary, determining a useful definition of renewable groundwater is more complex than it is for many other natural resources. Our view is that existing definitions currently make it a potentially cumbersome at best, or misleading at worst, concept in the context of sustainability science. We propose here that renewable groundwater use may be more clearly and practically defined and that doing so can also lead to new insights into its relationship to groundwater sustainability and strategies for quantitative groundwater management.

3. What Happens When We Pump?

3.1. Groundwater Quantity Considerations

To move toward a more robust definition of renewable groundwater use, we now use a thought experiment of a simple aquifer and consider changes to its overall water balance with and without groundwater pumping. The groundwater balance of the aquifer can be stated as:

$$\frac{dS}{dt} = R - D - Q \tag{1}$$

where S is total groundwater storage [L], t is time [T], R is the recharge rate [LT^{-1}], D is the rate of groundwater discharge other than pumping [LT^{-1}] and Q is the rate of pumping [LT^{-1}]. Note, throughout the paper,

by recharge we mean “the downward flow of water reaching the water table, adding to groundwater storage” (Healy, 2010, p. 3). For the following discussion, it is useful to break–down these terms further as follows:

$$R = R_0 + \Delta R_Q + \Delta R_N \quad (2)$$

$$D = D_0 + \Delta D_Q + \Delta D_N \quad (3)$$

where R_0 is the pre-development recharge rate, the change in the recharge rate from the pre-development rate due to pumping or natural transients is given by ΔR_Q and ΔR_N , respectively, D_0 is the pre-development natural groundwater discharge rate, and the change in the discharge rate from the pre-development rate due to pumping or natural transients is given by ΔD_Q and ΔD_N , respectively. This is an extension, to account for natural transients, of the relationships given by Bredehoeft (2002).

We assume the abstractions are widely spatially distributed, and hence all our considerations here are on the large-scale water balance, not the detailed hydraulics of an individual abstraction well, in a similar conceptual framework as Bierkens et al. (2021). Further we assume that the aquifer has impermeable boundaries laterally and at its base, that it may receive recharge via precipitation and/or via stream leakage, and groundwater may also discharge naturally, for example, to streams as baseflow or as evapotranspiration. The recharge received by the aquifer reflects superposed climatic variations operating on multiple time periods, but is assumed to be in quasi-steady state and stationary over the time period of the groundwater development. that is, in this thought experiment, $R_0 \sim D_0$ and $\Delta R_N \sim 0 \sim \Delta D_N$ in a similar manner to Bredehoeft (2002). Later we will also consider the implications of relaxing these assumptions.

In an unpumped situation, the hydraulic heads (hereafter “heads”) in the aquifer fluctuate in a dynamic steady state around some value above the elevation of the lowest hydraulically-connected streambed overlying the aquifer (the “drainage base-level”). If constant rate pumping begins, groundwater is taken out of storage as the well drawdown cones superpose themselves across the aquifer. The evolving change in hydraulic gradients due to pumping causes a combination of (a) changing rates of recharge (ΔR_Q) through the capture of evapotranspiration (ET) from the vadose zone or surface/shallow-subsurface runoff, (b) changing rates of discharge (ΔD_Q) through the capture of stream baseflow, evapotranspiration and/or altered rates of exchange with other neighboring geological units. The combination of (a) and (b) are termed capture (C). that is,:

$$C = \Delta R_Q - \Delta D_Q \quad (4)$$

where ΔR_Q and/or ΔD_Q are negative when a decline in the value of R or D occurs, respectively, due to pumping. If the rate of pumping is less than the maximum rate of capture (C_{\max}), the heads will gradually come to a new dynamic equilibrium (e.g., green and orange lines on Figure 2) at which time all of the pumping is being sourced from capture, and no longer from changes in storage. The maximum rate of capture is sometimes also referred to as the physically sustainable pumping rate (Bierkens & Wada, 2019; Gleeson et al., 2020); we discuss below why we choose not to continue this nomenclature here. Note that if the maximum rate of capture is achieved, the environmental impact would be devastating—for example, all evapotranspiration of groundwater would cease, leading to the destruction of groundwater dependent ecosystems and all baseflow to streams would cease. Furthermore, any net groundwater discharge from the region of interest would cease, as might the extent of saturation-excess surface runoff. These effects all have ecological, societal and economic implications. Below the maximum rate of capture, groundwater-surface water interactions remain bi-directional and at least part of the stream network may be perennial. If pumping then ceases, the reverse of the capture process occurs, with “release” of baseflow, runoff and evapotranspiration, assuming groundwater dependent vegetation becomes re-established, ensuing until the system returns to a new dynamic steady state once more.

There may be some differences in the timescales of capture and release, for example, due to hysteretic relationships between heads via bi-directional stream-aquifer interactions. However, for the widely distributed pumping assumed here, both processes can be approximated using a characteristic timescale referred to variably as the reservoir co-efficient (Kraijenhoff van de Leur, 1958), aquifer response rate (Erskine & Papaioannou, 1997), time constant (Rousseau-Gueutin et al., 2013), mean action time (Simpson et al., 2013), hydraulic response time (Alley et al., 2002) or groundwater response time (GRT) (Cuthbert et al., 2019a) which is the term we will use here. Such response times are principally related to the physical properties of the system in question (e.g., stream geometries, hydraulic properties of the aquifer, distance between geological and hydraulic boundaries) and not to

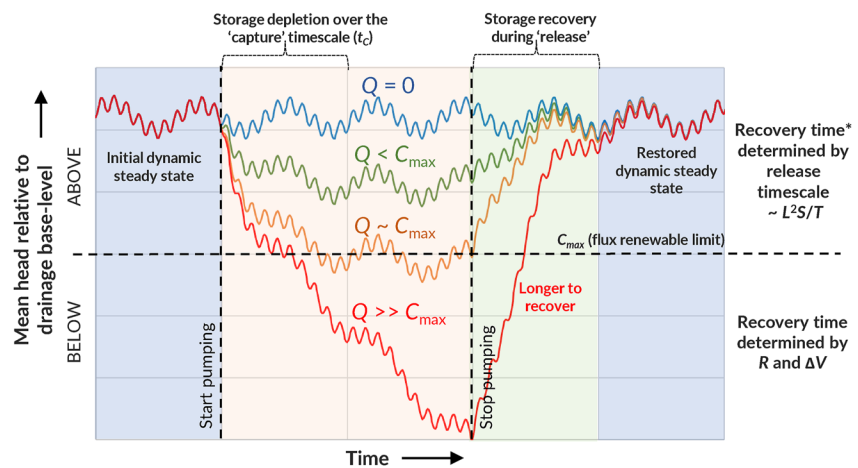


Figure 2. Controls on the dynamics of pumping and recovery of a generic groundwater system. R = recharge, ΔV = storage depletion during pumping, Q = pumping, C_{max} = rate of maximum capture, L = characteristic aquifer length scale, S = storage coefficient, T = transmissivity. Plotted using a lumped explicit finite-difference solution to Equation 1, with $R = R_0$ defined by a superposition of sinusoidal signals of various periods, and D set as proportional to the head difference above the drainage base level while above the base level, and zero when below. Assumes fully elastic behavior, no irreversible compaction, and re-establishment of groundwater dependent vegetation on recovery. *Relative recovery time; in absolute terms this will also depend on Q .

the initial, pre-pumping, rate of recharge (Bredehoeft, 2002). Note, these hydraulic response times should not be equated or confused with groundwater residence times or ages (Ferguson et al., 2020).

Since the connection to surface water courses may vary with time for a given aquifer depending on the relative water level at a particular climatic state, the response time may also change through time. For an individual well, or group of wells, the time to full capture (Bredehoeft & Durbin, 2009) or release (t_c) may significantly deviate from the GRT of the aquifer as a whole depending on the relative position of the wells and boundary conditions. For example, shorter times to equilibrium and a smaller proportion of depletion compared to capture are expected for wells positioned closer to streams (Konikow & Leake, 2014). Whether the full capture timescale is considered in relative or absolute terms is also important. Where the timescale is calculated as the time to reach a threshold relative drawdown (or streamflow depletion) as a proportion of the maximum drawdown (or streamflow depletion), the timescale is solely related to the hydraulic properties of the system and not the pumping rate. However, if the timescale is defined in absolute terms, for example, with respect to a threshold change in groundwater level or streamflow, then the pumping rate will also be a contributing factor in the magnitude of the timescale for a threshold to be reached.

If the rate of pumping is greater than the maximum rate of capture, the heads in the aquifer will eventually fall below the drainage base level (red line on Figure 2) and stream-aquifer interactions will become uni-directional. In this situation, recharge may still be received by the aquifer from losing streams but the aquifer is no longer able to hydraulically feedback on this process (Bierkens & Wada, 2019; Quichimbo et al., 2020). In such cases the continued rate of lowering of heads, and the recovery of heads should pumping cease, will increasingly be governed by the relative rates of recharge and pumping in conjunction with the specific yield of the aquifer and the duration of the pumping. This rate of depletion or recovery thus has distinct controls from the lower pumping cases described above for situations where the groundwater is still able to feedback hydraulically to the stream network in a bi-directional sense. While heads are below the drainage base level, the rate of recovery will always be faster than the rate of depletion. This stems from the fact that during depletion the rate is determined by the difference between the recharge rate and pumping rate, whereas during recovery just the recharge rate becomes relevant (Figure 2). Longer recoveries are to be expected to result after longer pumping periods or higher pumping rates relative to maximum rates of capture. However, since there is a potentially complex trade-off between these two factors and the hydraulic properties of a particular aquifer, we do not propose quantitative metrics in a general sense here.

Similar thought experiments can be carried out for more complex aquifer systems. For example, there may be head-dependent inflows or outflows with other neighboring geological units, large water bodies, or the sea. In

such cases there will be a more complex balance of capture with the landscape (via changes in streamflow and evapotranspiration) and laterally with the adjacent sources or sinks of groundwater. However, despite the more complex quantification of capture and release in practice, the overall concepts outlined above will still hold.

3.2. Groundwater Quality & Hydromechanical Considerations

We have focussed so far only on groundwater quantity, in line with the previous literature on renewable groundwater. However, capture resulting from pumping can also have significant consequences for other aspects which may impact groundwater renewability such as groundwater quality and hydromechanical changes in the aquifer.

Of particular importance is the situation when the quality of captured water is inconsistent with the background groundwater chemistry of the aquifer which the development is targeting. For example, contaminated or naturally more saline water may be induced to recharge an aquifer. This may happen where pumping moves the position of the saline interface either in coastal areas or island aquifers (Werner et al., 2013), or where lower quality water is brought in from adjacent formations (Ferguson et al., 2018). In some contexts, pumping may also cause internal shifts in chemistry leading to deteriorations in groundwater quality, for example, via the mechanism of anthropogenic basin closure (Pauloo et al., 2021).

It is possible that if abstraction rates are high enough, the time taken for water quality to recover to its pre-pumping state may be much greater than the hydraulic response time. For example, with regard to saline groundwater, interfaces between saline and fresh water do not remain sharp since conductivity heterogeneity and anisotropy and larger dispersivities may induce mixing, which results in brackish zones that may take very long times to disperse (see Bierkens & Wada, 2019 and references on salinization therein).

There are also contexts in which the lowering of heads in an aquifer can cause irreversible changes in the properties or state of the system. Firstly, dewatering can cause consolidation of more compressible formations leading to land subsidence and irreversible (i.e., non-elastic) loss of groundwater storage (Galloway & Burbey, 2011). For example, the California Central Valley aquifer system permanently lost an estimated 0.4%–3.25% of its storage capacity due to pumping during a period of drought between 2012 and 2015 (Ojha et al., 2019). Secondly, although it is not yet well understood, it is possible that, because of non-linear dynamics in a coupled climate-vegetation-hydrological system, pumping may cause a groundwater system to switch states to a regime from which it will not recover simply by stopping pumping (Peterson et al., 2021; Zipper et al., 2022).

In certain contexts the maximum rate of capture (C_{\max}) may therefore be an overestimate of the maximum rate of pumping consistent with these hydrochemical or hydromechanical considerations. Hence in the rest of the paper the “maximum rate of capture” refers to the maximum rate of pumping allowing the aquifer to recover flows and storage of consistent quality groundwater. We denote this by Q_R to make the distinction explicit.

4. Redefining Renewable Groundwater Use

The above thought experiment indicates that, while some degree of storage depletion is always required for any groundwater development (Theis, 1940), there are two major controls on the extent and timescales for aquifer depletion and recovery.

- The rate of pumping (Q) relative to the maximum rate of capture (Q_R) which amounts to a more restrictive definition of whether the pumped system is “capture-constrained” or not (Konikow & Leake, 2014).
- The time to full capture or recovery (t_C) of pumping at the rate Q_R , relative to a given human timescale of interest (t_H).

We propose that these factors relate directly to improving “flux-based” and “storage-based” definitions of groundwater renewability, respectively as follows.

1. **Flux-renewable groundwater use, defined as the rate of pumping being less than the maximum rate of capture.** This definition extends the renewable pumping rate to the maximum rate of capture rather than restricting itself, unrealistically, to the pre-pumping recharge rate as per existing definitions.
2. **Storage-renewable groundwater use, defined as the potential full recovery of groundwater levels, flows and quality within human timescales.** This explicitly accounts for the timescale of renewal of groundwater storage, rather than the less meaningful ratio of storage to recharge given by previous definitions.

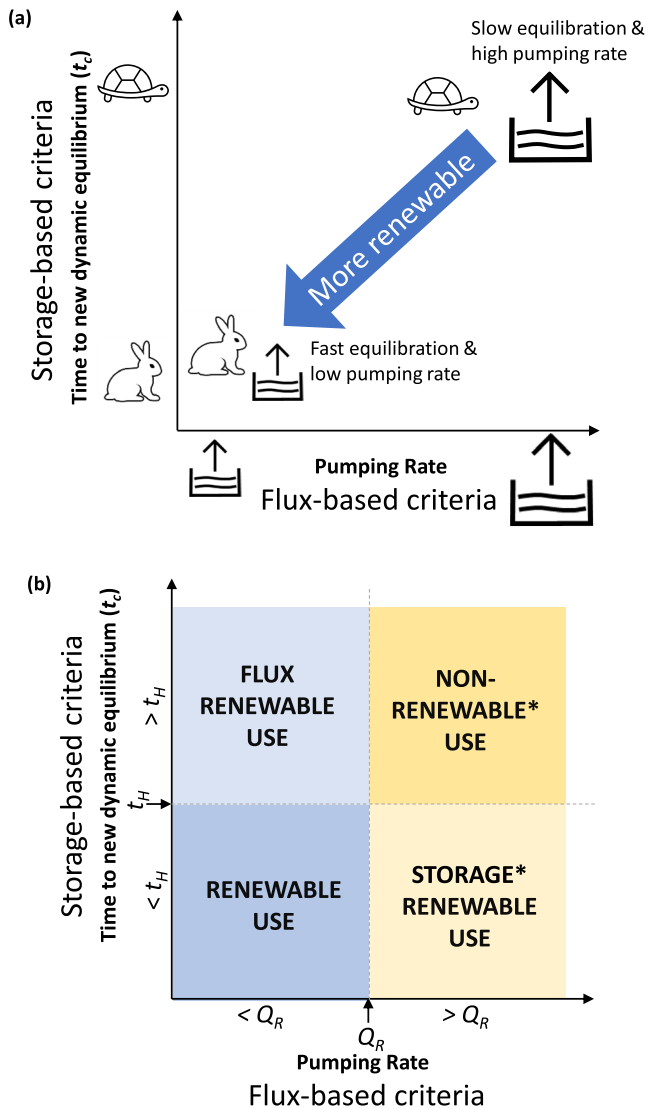


Figure 3. (a) Illustrating the possible range of combinations of flux-based and storage-based criteria for renewable groundwater use (b) Four quadrants of renewable groundwater use Q_R = maximum rate of pumping which also allows the aquifer to recover flows and storage of consistent quality groundwater, t_H = human timescale. *See text for details of the sub-conditions for the right-hand quadrants which are never flux-renewable but may represent storage renewable use for lower pumping duration magnitudes.

By using these two definitions as axes, we can then describe four quadrants of renewable groundwater use for each combination of flux-based and storage-based criteria as follows (Figure 3).

1. **Renewable Use** (lower left quadrant): *systems where pumping is less than the maximum rate of capture, and have short response times ($Q < Q_R$, $t_C < t_H$).* From a flux-based perspective this quadrant therefore represents renewable groundwater use. From a storage-based perspective, the situation also always represents renewable use irrespective of how long the pumping continues. This is the case in this quadrant since $Q < Q_R$ and thus the recovery time is solely controlled by the hydraulic response which will be approximately equal to t_C and thus will also be less than t_H .
2. **Non-flux-renewable Use** (lower right quadrant): *systems where pumping is greater than the maximum rate of capture, but have short response times ($Q > Q_R$, $t_C < t_H$).* From a flux-based perspective, this is a situation of non-renewable groundwater use. However, from a storage-based perspective, it is possible for the situation to represent renewable use depending on the specific combination of pumping duration and magnitude, t_C and water quality considerations.
3. **Flux-renewable Use** (upper left quadrant): *systems where pumping is less than the maximum rate of capture, but have long response times ($Q < Q_R$, $t_C > t_H$).* From a flux-based perspective, this is a situation of renewable groundwater use. In this quadrant, the recovery time will be controlled only by the hydraulic response time since $Q < Q_R$ and groundwater levels will never fall below the drainage base level. Hence, from a storage-based perspective, the quadrant will represent non-renewable use since $t_C > t_H$, with the exception of where pumping durations are less than t_H .
4. **Non-renewable Use** (upper right quadrant): *systems where pumping is greater than the maximum rate of capture, and also have long response times ($Q > Q_R$, $t_C > t_H$).* From a flux-based perspective, this is a situation of non-renewable groundwater use. From a storage-based perspective, this quadrant may nevertheless represent renewable use for the same reasons as the lower right quadrant. However, the conditions under which this is possible are much more constrained owing to the larger t_C .

Only in the bottom left quadrant is groundwater use always renewable under both flux and storage-based definitions. In this quadrant, unless the system is highly hysteretic, the recovery time will also approximately equal the time for an aquifer to reach a new dynamic equilibrium after the onset of pumping. Hence, we propose here that:

Renewable groundwater use allows for dynamically stable re-equilibrium of groundwater levels and quality on human timescales.

A key implication implicit in this definition is that *defining renewable or non-renewable groundwater without considering how it is being used is impossible*. For use to be renewable it must lead to full and reversible capture of consistent quality groundwater within human timescales. “Groundwater renewability” per se cannot therefore be defined without consideration of the spatio-temporal distribution of the pumping itself. Note, in this paper we are being deliberately imprecise about how a “human timescale” is defined, since we would like the definition to be as generally applicable as possible.

Long-term transients in groundwater levels and flows may occur well beyond human timescales due, for example, to non-stationary climate or land use change (i.e., $R_0 \neq D_0$ and $\Delta R_N \neq 0 \neq \Delta D_N$). In such a situation, from a flux perspective, the rate of pumping that can be considered renewable must also change through time. For example,

if recharge is decreasing over time, a pumping rate that initially allows for renewable use may eventually lead to non-renewable use over time from a flux perspective. Furthermore, from a storage perspective, the concept of renewable groundwater use will only have meaning relative to the storage change that might have occurred naturally over a particular period of concern.

The bottom left quadrant is the only one that will always represent renewable groundwater use for both flux and storage/levels. If pumping is restricted in time, both the right-hand quadrants may also be considered renewable but only from a storage-based perspective. In other words, recovery of levels is possible over a human timescale after cessation of pumping but only under specific criteria particular to their quadrant that is, depending on the particular Q_R/Q ratio, duration of pumping and time to full capture.

The estimation of Q_R may be even more challenging than estimating the pre-pumping rate of recharge. Although this reality does not change the fact that our definition is more robust hydraulically than previous definitions, we discuss the practical implications of this in Section 6 below.

5. Illustrating the Four-Quadrant Framework With Representative Cases for Characterizing Renewable Groundwater Use and Management Pathways

To illustrate how some of the features of each quadrant play out in the real-world, we now present a series of short case studies drawn from the literature and show how this four-quadrant mapping may be a useful tool for delineating groundwater management pathways toward more renewable groundwater use. We have drawn these case studies from our understanding of the literature to help illustrate and contextualize our concepts, but acknowledge the limitations of our understandings and that local conditions in any of these case studies may differ from the generalities found in the literature.

5.1. Lower Quadrants ($t_C < t_H$)

Inherently, within these lower quadrants with fast response times (low t_C), the pre-development rates of recharge and discharge are likely to be in balance (i.e., $R_0 \sim D_0$). Furthermore, problems due to over-abstraction may become quickly apparent. While this may be a disadvantage when climatic shocks such as droughts occur, it also means problems related to over-pumping can quickly be addressed and mitigated within human timescales. In such systems, “monitor and react” approaches to management (Thomann et al., 2020) may therefore be effective, whereby ongoing monitoring of field conditions supports managers to make adjustments in allowable groundwater extraction. However, it is important to note that the use of groundwater level triggers (so called trigger-level management, Werner et al., 2011) maybe misleading in, at least, certain coastal contexts (Morgan et al., 2012) or for protecting groundwater dependent ecosystems (Currell, 2016). We give two contrasting groundwater-use case studies here for two types of aquifers: crystalline basement and Chalk (limestone).

5.1.1. Crystalline Basement

Weathered crystalline rock aquifer systems in humid equatorial Africa are discontinuous but occur across much of the wet tropics (Taylor & Howard, 2000). They typically comprise a shallow unconfined (or semi-confined) aquifer within an unconsolidated regolith that is often hydraulically connected to an underlying aquifer within fissured bedrock (Lachassagne et al., 2021). Seasonal (monsoonal) recharge occurs annually (Kotchoni et al., 2019; Owor et al., 2009), groundwater levels consistently lie above the base level of surface drainage, and groundwater drains to perennial surface waters including lakes, rivers and wetlands (Cuthbert et al., 2019b). These systems are not often thought to form large-scale regional aquifers, with smaller local flow systems more common, governed by fracture networks, lithological discontinuities and faults. Furthermore, in the humid tropics where recharge is generally high, the distance between perennial streams is often less than a few km (Cuthbert et al., 2019a). Transmissivity is typically low ($<10 \text{ m}^2/\text{day}$), and specific yield is moderate to low ($5\% \pm 4\%$), leading to characteristic GRTs commonly less than 50 years. In combination with typically low pumping rates, often but not always constrained by low transmissivities, groundwater use is likely to be renewable in many parts of such aquifers, thus they are situated in the lower left quadrant.

In other parts of the world, similar crystalline basement aquifer systems with quick response times are sometimes being over-pumped with respect to the maximum capture, moving them into the lower right quadrant. Some of the hard rock aquifers in Peninsular India fall into this category, commonly being storage-limited with dense drainage

networks (Bhanja et al., 2020; Fishman et al., 2011; Hora et al., 2019). For example, shallow, fractured hard rock aquifers with low yields in Telangana region, Andhra Pradesh are important sources of irrigation for a major rice-producing area (Fishman et al., 2011). Since most of these rocks have negligible primary porosity, while pumping rates may regularly exceed rates of maximum capture, the limited groundwater storage places a physical restriction on irrigation from year to year. Consequently, irrigated areas have to be reduced when the pre-season depth to groundwater is low, and water table fluctuations explain a significant part of the large annual variability in irrigated or rice cultivated areas. More broadly across Southern India, groundwater recovery has been reported based on GRACE satellites, water level measurements in groundwater monitoring wells and global hydrological models (Asoka et al., 2017; Bhanja et al., 2020) which are at odds with reports of well failure and decreases in the land area irrigated from shallow wells (Hora et al., 2019). Hora et al. (2019) argue that recently reported results are skewed by the problem of “survivor bias”, with dry or defunct wells being systematically excluded from trend analyses due to missing data and that including these wells reveals increasing groundwater stress in South India.

5.1.2. Chalk (Limestone), Northwestern Europe

The Chalk (limestone) is an important regional aquifer in north-western Europe. Its hydraulic properties derive primarily from the presence of fractures and their development through dissolution that is enhanced under phreatic (unconfined) conditions and in valley bottoms (Allen & Crane, 2019; MacDonald & Allen, 2001). GRTs are generally $<<50$ years owing to the high transmissivity ($>1000 \text{ m}^2/\text{d}$ is common) in combination with low specific yield ($<$ a few percent) and relatively short distances between perennial streams. Seasonal (predominantly winter) recharge (Goderniaux et al., 2021) occurs annually and groundwater discharge provides baseflow to rivers and chalk streams, some of which are seasonal. Groundwater abstraction in Europe is often well-regulated to protect streamflows under the EU Water Management Directive, hence in many parts of the aquifer the licensed as well as actual use is significantly less than the maximum rate of capture. This is the case in the Paris Basin (Maréchal & Rouillard, 2020) for example, where an agreement with farmers to restrict abstraction volumes for irrigation has been achieved (Lejars et al., 2012).

However, incidences of localized intensive pumping exceeding capture have recently been noted in the drying of Chalk streams following successive dry winters in southeastern England (Allen & Crane, 2019; Jackson et al., 2015). Overall, the groundwater use of this aquifer is often renewable, and when the impacts of prolonged drought do manifest, the levels and flows are quick to recover once winter recharge resumes.

5.2. Upper Quadrants ($t_C > t_H$)

Inherently, within these upper quadrants with slow response times (high t_C), problems due to over-abstraction may take more than a lifetime to become apparent. While this may be an advantage when climatic shocks such as droughts occur, it also means problems related to over-pumping cannot quickly be addressed and mitigated within human timescales. Hence, in such systems, adaptive management (Thomann et al., 2020) may therefore be more problematic, and a strategy of flux-based management, alongside ongoing monitoring, may need to predominate (Werner et al., 2011). We give two contrasting groundwater-use case studies here for contrasting sedimentary aquifers.

5.2.1. Nubian Sandstone Aquifer, Northeastern Africa

An important example of a regional aquifer with a long GRT, the Nubian Sandstone Aquifer, is a partly phreatic aquifer of fine to coarse grained sandstones of Late Triassic to Early Cretaceous age (Heinl & Brinkmann, 1989; Salem, 2016). Current recharge rates are thought to be low for the Nubian Sandstone Aquifer, although exactly how low is a matter of some debate (Ahmed & Abdelmohsen, 2018; Darling et al., 1987; Sultan et al., 2011), with little opportunity for increasing recharge due to pumping. The large response times cause long lag times between recharge and discharge such that the aquifer heads (i.e., storage) are still receding from the last major recharge period 10,000 years ago (Lloyd & Farag, 1978). Hence, while capture of discharge to oases and the seaward boundary will eventually occur, any significant groundwater development will also lead to long-term aquifer depletion. In light of this, very low rates of abstraction would be required to keep this aquifer in the upper left quadrant to maintain a state of flux-renewable use. In the present state of development, the rates of abstraction are much larger, meaning that “managed aquifer depletion” is the current groundwater management situation (Ahmed & Abdelmohsen, 2018). Owing to the combination of a very high response time and a major historic change in recharge rate, the concept of renewable use with respect to storage is perhaps not very meaningful in this, or similar, cases.

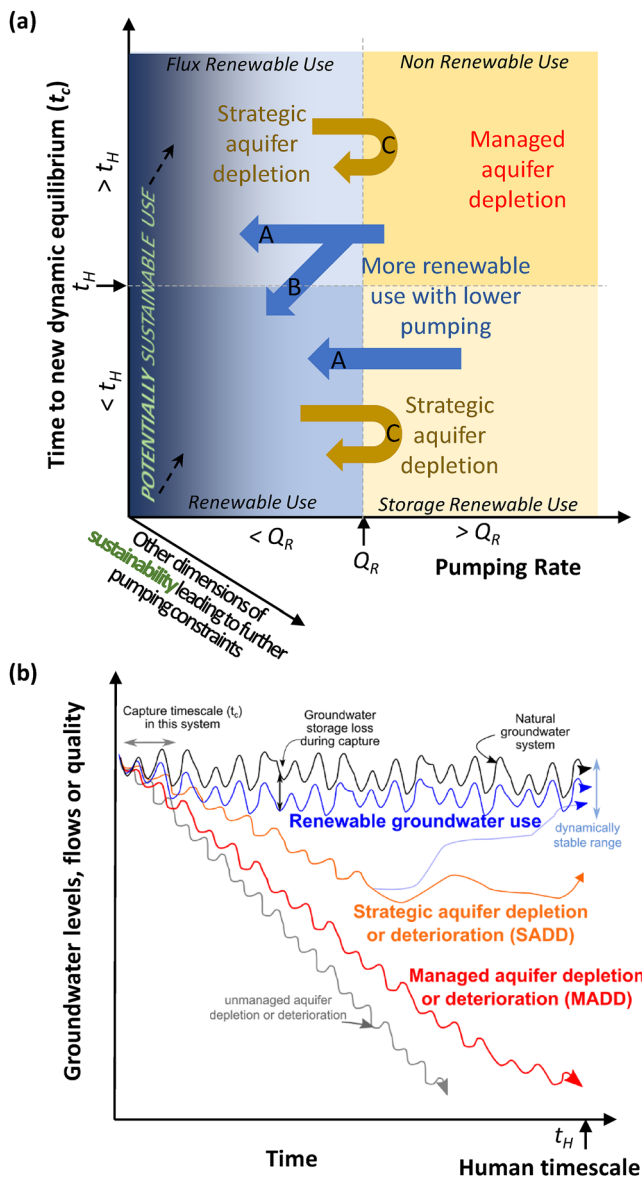


Figure 4. (a) Renewable groundwater use quadrants related to different aquifer management strategies and groundwater sustainability. Groundwater management pathways denoted by arrows A-C are described at the end of Section 5. The third axis of “other dimensions of sustainability” is shown to illustrate the deliberately “fuzzy” mapping of potential relationships between renewable and sustainable groundwater use as discussed more fully in Section 7 (b) Illustrative trajectories in time for renewable use status and various common groundwater management strategies shown in (a).

5.2.2. Permo-Triassic Sandstone Aquifers, UK

Alongside the Chalk aquifers discussed above, Permo-Triassic sandstone aquifers represent the most important groundwater resources in the UK. They comprise aeolian and fluvial, weakly cemented, red sandstones with high intergranular hydraulic conductivity enhanced by fracturing (Allen et al., 1997). Owing to the moderate transmissivity (median $\sim 200 \text{ m}^2/\text{d}$) in combination with high specific yield ($\sim 10\%$ is typical) GRTs are expected to be > 50 years where distances between discharge boundaries are large enough (Rushton, 2004; Shepley & Streetly, 2007). Recharge occurs predominantly in winter and groundwater abstraction is now well-regulated to protect streamflows under the pre-existing EU Water Management Directive and follow-on post-Brexit legislation. In many parts of the aquifer both licensed and actual uses are significantly less than the maximum rate of capture (Morris, 2021), although over-licensing has been highlighted in some areas and was particularly acute historically in the East Midlands sandstone (Hudson, 2002; Shepley et al., 2005). Hence these aquifers most often likely straddle the upper-left and lower-left quadrants, being operated under flux-renewable use, but not always being used renewably from a storage perspective where response times are greater than human timescales.

5.3. Implications for Groundwater Management Pathways

In many instances, response times of groundwater systems may not change significantly on management timescales. As such, groundwater in aquifers situated in the upper quadrants may never be used in a renewable way from a storage perspective even if pumping was reduced. In such cases the quadrant diagram is nevertheless a potentially useful tool for characterizing groundwater status within a management context. Management pathways toward more renewable use in such contexts will, therefore, generally represent movement on the quadrant plot from right to left rather than from upper to lower quadrants. Increasing pumping shifts aquifers from left to right on Figure 4a. We focus here on the implications and strategies for shifting from right to left, although we acknowledge that in many heavily abstracted aquifers this is a challenging undertaking. This may occur via reducing pumping toward flux-renewable use from situations where pumping is currently greater than Q_R (Figure 4a, A arrows). The ensuing increases in groundwater levels may be an important economic imperative with respect to equitable access to groundwater in regions where domestic wells are at risk from drying owing to agricultural or industrial abstraction (Jasechko & Perrone, 2021). There are also many examples of urban aquifers around the world where post-industrial decline of abstraction or switching from groundwater to surface water sources has led to aquifer recoveries along both such pathways (Buxton & Shernoff, 1995; Render, 1970).

In other instances, there may be significant transience in a groundwater system's hydraulic response time. This can occur for a number of reasons such as aridification of a recharge area as occurred historically for the Nubian Sandstone aquifer over the last 10 ka (Abouelmagd et al., 2014; Voss & Soliman, 2014), or land use change such as the clearing of native vegetation for agriculture in Niger in the more recent past which has led to increased groundwater levels and a greater degree of groundwater-surface water connectedness (Favreau et al., 2009). In other contexts, further pumping reductions within situations of already flux-renewable use would enable the re-establishment of previously perennial streams and groundwater dependent ecosystems, as discussed in the Chalk example above, and this may have impacts on reducing response times. Hence, the context for groundwater management within the quadrant diagram may

not be fixed in time due to transience in such groundwater systems. This behavior may allow for movement from upper to lower quadrants (in the case of pumping reductions, Figure 4a, B arrow).

Aquifers currently in the right-hand quadrants, despite being in a situation of non-renewable use from a flux perspective, are sometimes managed for “strategic aquifer depletion” (Figures 4a, C arrows, and time series in Figure 4b). This is where the aquifer is used temporarily, for example, during a long drought period, at a pumping rate that is well above than Q_R , but in the knowledge that once pumping ceases, groundwater levels and flows will return to their previous equilibrium values within human timescales.

The High Plains Aquifer (HPA or Ogallala Aquifer), USA, usefully illustrates some of these issues. It is one of the largest aquifers in the world, comprising Neogene-age, generally poorly consolidated, gravels, sand, silt and clay (Divine et al., 2018) and is mostly unconfined. The central portion of the Northern HPA in Nebraska is thought to receive recharge of 100–200 mm/y (Scanlon et al., 2012) and has the greatest saturated thicknesses, and hence transmissivities, of the whole aquifer unit, which is still well connected to the surface drainage (Scanlon et al., 2012). Hence, response times may be within human timescales indicating a fully renewable case (lower left quadrant) where pumping is often less than the maximum capture rates. However, as one moves further southwards within the aquifer, recharge rates decrease substantially by as much as two orders of magnitude yet the aquifer is still highly utilized for irrigated agriculture. Hence in the Southern Ogallala Aquifer (SOA), currently groundwater levels are, to a great extent, well below drainage base levels, and pumping rates are larger than maximum rates of capture. While strategic depletion as part of groundwater management may be theoretically possible, in principle, in parts of the aquifer, withdrawal rates have been persistently exceeding capture for the SOA for decades. Recent efforts to reduce further depletion in the HPA have shown that if recharge and pumping are balanced after maximum capture has been exceeded, a new equilibrium can be achieved (Butler et al., 2018, 2023). While this does not reverse ecological damage that has been done by lowering groundwater levels below streams, it does provide a path forward that allows for continued groundwater extraction in heavily stressed aquifers.

6. Challenges and Approaches to Implementing the Quadrant Framework

For the proposed framework to be useful, the key metrics of capture magnitudes and timescales need to be reliably estimated. Recommending specific management approaches for specific quadrants or aquifers is beyond the scope of this manuscript but herein we outline the sorts of approaches that could be taken and tailored to more local needs.

A spectrum of approaches is available, of increasing detail depending on the data availability, budgetary constraints and risk-reward context of the decision-making process. Space precludes a thorough review of various available methods (e.g., Li et al., 2022), but developing a hydrogeological conceptual model should always be the starting point (Rushton, 2004; Rushton & Skinner, 2012). Where sufficient data are available the well-tested combination of iterative field observation and analytical or numerical modeling is recommended (Ferré, 2017).

Appropriately evaluated groundwater models with properly constrained uncertainty bounds can provide the necessary tools for testing the likely capture magnitudes and timescales of a groundwater body, and subsequent management. However, in many parts of the world, long-term groundwater monitoring data and detailed field investigations of aquifer parameters or forcing data are often unavailable. Furthermore, sufficient economic or human resources may be too sparse to make this “gold standard” approach viable. In such contexts implementing the quadrant framework may be challenging. Hence, we offer the following suggestions for ways to combine expert judgement with a minimum amount of data, and to guide the appropriateness of any simplifications to the water budget equations (Equations 1–4) which might make the calculations more tractable until more data and/or resources are available.

Where detailed modelling is not possible due to resource constraints, or warranted due to insufficient data for forcing or evaluation, the capture timescale may be approximated via a GRT calculation (Alley et al., 2002; Cuthbert et al., 2019a; Kraijenhoff van de Leur, 1958; Rousseau-Gueutin et al., 2013; Rushton, 2004; Simpson et al., 2013). However, this should be used with care, and with due attention to the likely direction and magnitude of any uncertainties involved. The distance between groundwater fed perennial streams or other hydraulic boundaries (L) is normally straightforward to approximate (Cuthbert et al., 2019a; Erskine & Papaioannou, 1997), but since this term is squared in the GRT equation, its uncertainty should be duly incorporated. Hydraulic properties

of the aquifer (S , T) under consideration may be more uncertain, depending on the available mapping and prior field investigation.

The GRT is then proportional to L^2S/T with the constant of proportionality to be chosen depending on the geometry of the system and the proportion of the total re-equilibrium (e.g., 63%, 90%, 99%) as appropriate.

If the system has a short GRT, it is likely to be in dynamic equilibrium and it may be safe to assume $R_0 = D_0$. If no significant trends in recharge are expected due, for example, to climate or land-use changes, then it can also be assumed that $\Delta R_N \sim 0 \sim \Delta D_N$. Once full capture has been achieved, $\frac{dS}{dt} = 0$, and using Equations 1–3, the maximum capture becomes $C_{\max} = \Delta R_Q - \Delta D_Q$. In this case, since the maximum value of ΔD_Q will equal $-D_0$ ($= -R_0$), the maximum capture becomes $C_{\max} = R_0 + \Delta R_Q$. In some situations where the assumption $\Delta R_Q \sim 0$ is warranted, an estimate of the maximum capture may be made by assuming $C_{\max} = R_0 = D_0$. In similar situations and where ΔR_Q is likely significant but unknown, R_0 will be a minimum estimate for the rate of C_{\max} . It is crucial to note, however, that pumping at this rate would lead to zero groundwater discharge which would be disastrous to terrestrial and aquatic groundwater-dependent ecosystems.

This discussion raises the issue of the so-called “water budget myth” (Bredehoeft et al., 1982) which asserts that the rate of R_0 is not of relevance to the “size of a sustainable groundwater development” (Bredehoeft, 2002). The logic of the previous paragraph negates the relevance of the water budget myth argument, at least in some circumstances. Furthermore, it is of note that every paper (that we are aware of) that has engaged with the water budget myth debate over the past 40 years has been either explicitly or implicitly predicated on the assumption of a short response time aquifer situated in a stationary recharge regime that is, $R_0 = D_0$ and $\Delta R_N = 0 = \Delta D_N$ (Bredehoeft, 2002; Bredehoeft et al., 1982; Devlin & Sophocleous, 2005, 2006; Kalf & Woolley, 2005; Loaiciga, 2006, 2017; Zhou, 2009). Presumably this is for didactic reasons for conceptually dealing with the principle of capture in a similar vein to our thought experiment above.

However, since it is likely that many, if not most, of the world's major aquifers actually have response times rather longer than human timescales (Bredehoeft & Durbin, 2009; Cuthbert et al., 2019a; Rousseau-Gueutin et al., 2013), this is a fundamental oversight. Theoretically at least, for periodic recharge forcings, R_0 and D_0 are likely to be out of phase as long as GRT is greater than the period of the forcing (Townley, 1995). The lag time between a recent step change in R and the subsequent impact on D , will also approximate the GRT (Rousseau-Gueutin et al., 2013). Furthermore, it should not be assumed that recharge is stationary on human timescales owing to climate variability (both natural and anthropogenically altered) or land-use change (Favreau et al., 2009).

Hence for large response time systems, there may be transients in the long-term water balance, R_0 and D_0 may be in disequilibrium, and it should not be assumed that $R_0 = D_0$. Neither should it be assumed that it is only pumping which could cause a long-term change in R and D since these fluxes may effectively always be in disequilibrium that is, that $\Delta R_N \neq 0 \neq \Delta D_N$. However, very large GRT systems tend to be more prevalent in more arid parts of the world where it may be safe to assume less feedback between recharge and heads in the aquifer. In these contexts, it may be reasonable to assume that $\Delta R_Q \sim 0$, but we note that recent research indicates this may not be as safe an approximation than is often presumed (Quichimbo et al., 2020).

These considerations indicate that, for many aquifers around the world, transients in various water balance elements may be important to consider and therefore the long-term influence of widespread pumping may be hard to ascertain clearly amidst these natural transients from monitoring alone. Hence, we maintain here that the key to robustly understanding capture is through a combination of long-term monitoring and bespoke numerical modelling, in the context of environmental change. This is, after all, one of the main reasons “why hydrogeologists model” (Bredehoeft, 2002). In this context, the advice of Bredehoeft and Durbin (2009) is appropriate:

“...it takes some ground water systems an inordinately long period to reach a new equilibrium. The time may be so long that the fact that a new equilibrium eventually is reached becomes meaningless. The bottom line is—it is important to predict the time trajectory of ground water systems, especially if one hopes to manage the system.”

With respect to collecting the critically important long-term groundwater monitoring for good groundwater management, data not just of levels, flows and groundwater quality are needed (Rau et al., 2020), but also improved ways of recording or estimating variations in groundwater abstractions at large scales (Butler et al., 2021).

Even if the hydraulic response times and maximum capture rates can be estimated with sufficient certainty using a relatively simple approach, the inclusion of water quality aspects in these calculations may be more challenging. In most contexts as stated above, we anticipate that the time taken for water quality to recover to its pre-pumping state may be much higher than the hydraulic response time, and the rate of maximum quality capture (Q_R) may be significantly lower than the flux-renewable pumping rate (C_{\max}). This is a key challenge for the application of the framework and the importance of a sound conceptual hydrogeological model is again paramount.

7. The Relationship Between Renewable and Sustainable Groundwater Use

The process of outlining a new definition of renewable groundwater use led us to delineate the four quadrants shown in Figure 3. This raises the question as to how this framework relates to the broader question of groundwater sustainability. For example, can sustainable groundwater use only be present in the lower left, renewable use, quadrant?

A comprehensive review by Mace (2022) makes it clear that there is a great diversity of opinion as to what groundwater sustainability means within wider society, and also within the groundwater science community. Indeed, despite having written on this topic previously themselves, the authors of this commentary hold subtly different opinions about what should constitute sustainable groundwater use, while being in agreement about the nature of how to define renewable groundwater use more robustly. This highlights the value-laden nature of the term “sustainable”, not just within the context of groundwater but more broadly.

As such, Mace (2022) suggested his preferred definition of groundwater sustainability to be that of Alley et al. (1999) as follows:

“the development and use of ground water in a manner that can be maintained for an indefinite time without causing unacceptable environmental, economic, or social consequences”

His reasons for this are in preferring to “see sustainable production as being defined solely from the perspective of the aquifer”. Using such a definition, sustainable groundwater use can only intersect with our definitions of renewable use within the two left-hand quadrants of Figure 3, where pumping is less than the maximum capture, since only in these quadrants can pumping be maintained indefinitely. In many societies, what is deemed unacceptable with regard to environmental, economic, or social consequences will lead to sustainable pumping being much less than the rate of maximum capture, as indicated by the “fuzzy” zone of “potentially sustainable use” indicated in Figure 4a.

In contrast, a more recent definition of groundwater sustainability extends the scope of groundwater sustainability to explicitly include the notion of dynamic stability of the system, something that can be physically monitored, as well as being more explicit about the socio-economic outcomes involved in sustainability:

“Groundwater sustainability is maintaining long-term, dynamically stable storage and flows of high-quality groundwater using inclusive, equitable, and long-term governance and management.”
Gleeson et al. (2020)

Importantly, and in contrast to previous definitions including Alley et al. (1999), this definition argues for approaching groundwater sustainability from a “stronger” sustainability perspective. Gleeson et al. (2020) described the distinction is between “weak” sustainability, where all forms of capital (natural, economic, etc.) can be substituted, and “strong” sustainability, where some natural capital stocks are non-substitutable and thus must be maintained independent of the growth of other forms of capital. This definition has broad awareness internationally as evidenced by the >1300 signatures from >100 countries of the Global Groundwater Statement (<https://www.groundwaterstatement.org/>) which includes this definition of groundwater sustainability (Gleeson et al., 2020). Under this definition, the first criteria of “dynamically stable storage and flows” restricts us to the left-hand quadrants where pumping is less than Q_R . The second criterion of “high-quality groundwater” is more open-ended and context specific, but as a minimum we can imagine further restrictions on the pumping rate to ensure local environmental flow and quality requirements can be met. The third criteria “using inclusive, equitable, and long-term governance and management” implies it is important to consider how groundwater is embedded in complex socio-political, economic and ecological systems which are not well represented in conventional approaches to study and promote groundwater sustainability. Furthermore, it could be imagined in different contexts that this determination may or may not allow for groundwater use in the upper left quadrant

to be considered sustainable (Figure 4a), despite being non-renewable use from a storage perspective; this will depend on whether the extent of the storage depletion and associated environmental impacts are considered socially and economically acceptable.

In contrast to, but in the spirit of, Mace's suggestion above, we consider that definitions of renewable use such as proposed here are viewed “solely from the perspective of the aquifer”, that is, by just considering the relevant groundwater hydraulics and changes to the water balance that ensue from pumping, but without value-laden considerations. However, once value judgments are placed into the discussion and decision-making process, then the language of sustainability, rather than renewability, becomes appropriate. We propose, consistent with Wood (2001), that this distinction be made in future discussions of groundwater management in order to delineate the physical processes (of which humans are one part) of renewable use from wider, value-driven processes of sustainable use. In other words, renewable groundwater use can be defined using the principles of groundwater science alone and based solely on the physical properties and behavior of the groundwater system. Determinations of sustainable groundwater use, in contrast, necessarily draw upon renewable groundwater use as just one criterion among many. Hence, renewable use will often be deemed a necessary, but insufficient, criterion for determining sustainability.

A recent and nuanced example of how the meaning of renewable and sustainable groundwater use may diverge, is the case noted above in the Chalk aquifer of SE England, where streamflows have been adversely impacted by a combination of dry winters and groundwater abstraction. There is currently an active and important debate about the relative cost/benefit of decreasing or relocation of groundwater abstractions to improve the health of such Chalk streams. For example, in comparison with stream augmentation and nature-based solutions Soley (2023) argues, on solid hydrogeological grounds, that “*The well-meaning environmental drive to switch off groundwater abstractions often results in disappointing river low-flow recovery and ineffective biodiversity outcomes*”. The extent of low-flow recovery is highly dependent on the local aquifer dynamics and how stream-aquifer interactions operate in the context of particular spatiotemporal arrangements of groundwater abstractions. Thus, despite the overall situation in the SE England Chalk being one of renewable use, as defined here, it is not a given that pumping relocations, or even reductions, are the most societally desirable actions toward more sustainable groundwater management.

8. Having “Renewed” the Discussion, How Can We Sustain It?

This commentary was motivated by our collective perception of inconsistency in the meaning and use of the terms “renewable groundwater” and “groundwater renewability” and their relationship to sustainability. Clarification of these terms is surely vital in the quest to improve sustainable management of groundwater, by enabling identification of clear goals and pathways to that end, and aiding clear and consistent communication among scientists, managers, policy makers and stakeholders.

We began by questioning in what way groundwater can be considered a renewable resource and concluded that it can't be defined as such without reference to the manner in which it is being used. We proposed a new definition: *Renewable groundwater use allows for dynamically stable re-equilibrium of groundwater levels and quality on human timescales*. We then showed how this leads to a useful four quadrant framework for quantitative groundwater resource characterization and management and illustrate this with reference to case studies from aquifers around the world.

We show that renewable groundwater use may be deemed a necessary, but not sufficient, criterion for determining groundwater sustainability, which typically encompasses several dimensions (e.g., socio-political, economic, ecological, and cultural) beyond the scope of groundwater science. We reiterate, following Wood (2001), that separating physically robust definitions of renewable groundwater use from the inherently value-based language of sustainability, can help bring much needed clarity to the wider discussions about sustainable groundwater management.

A logical next step is to extend our framework more fully with respect to groundwater quality and other hydro-mechanical or other linked groundwater abstraction related impacts. We would also like to see how our framework could be applied spatially toward realizing the water management typology called for by (Foster & MacDonald, 2014):

“By understanding the aquifer characteristics relevant to water security, it should be possible to establish aquifer typologies which will respond in a similar manner to external stresses—either from humankind or climate. These typologies could then be mapped along with current groundwater status, permitting clearer communication on the groundwater dimensions of water security at the political level.”

As with any overarching framework, important local details cannot be resolved at the same time as taking a panoramic view. However, we realize that for robust groundwater management such details will need to be brought into clear focus to give the necessary contextualization in any given environment.

Aspirationally, we hope that increasing experience of recovering, previously highly stressed, aquifer systems will aid the conversation (Butler et al., 2021). Within the urban context, useful lessons can also no doubt be learned from recovering groundwater systems in many post-industrial cities around the world (Lerner & Barrett, 1996).

Groundwater science has a clear strength and role in defining and analyzing renewable groundwater use, as is the focus of this paper. However, we consider that it is also critical as groundwater scientists, that we also contribute to broader discussions of defining and analyzing groundwater sustainability. For example, we need to rigorously assess the likely impacts of proposed “solutions” to real or perceived problems caused by groundwater abstraction, through dialog and training while respecting, collaborating and working with other disciplines using an agreed, robust and transparent shared vocabulary. Our definitions and clarifications in this paper are our attempt to contribute to this endeavor.

We hope this paper will stimulate practical reflections and therefore we end with the following questions, to promote further and wider dialog on this issue, and to encourage the reader to reflect on the practical possibilities of groundwater resources in their own experience.

- *Where do aquifers of concern currently plot on the quadrant diagram (Figure 3b)?*
- *Where would stakeholders, managers and decision makers like them to plot?*
- *What actions can be taken to get them there?*

We leave it to the community to explore the utility of the conceptual framework and implications we have proposed here and continue the discussion. We hope that by renewing such conversations we can help yield safer, more sustainable and less stressful or depleting definitions of groundwater use.

Data Availability Statement

There are no data or code associated with this Commentary.

References

- Abouelmagd, A., Sultan, M., Sturchio, N. C., Soliman, F., Rashed, M., Ahmed, M., et al. (2014). Paleoclimate record in the Nubian sandstone aquifer, Sinai Peninsula, Egypt. *Quaternary Research*, 81(1), 158–167. <https://doi.org/10.1016/j.yqres.2013.10.017>
- Ahmed, M., & Abdelmohsen, K. (2018). Quantifying modern recharge and depletion rates of the Nubian aquifer in Egypt. *Surveys in Geophysics*, 39(4), 729–751. <https://doi.org/10.1007/s10712-018-9465-3>
- Alcamo, J., Henrichs, T., Kaspar, F., Lehner, B., Röscher, T., & Siebert, S. (2003). Global estimates of water withdrawals and availability under current and future “business-as-usual” conditions. *Hydrological Sciences Journal*, 48(3), 339–348. <https://doi.org/10.1623/hysj.48.3.339.45278>
- Allen, D., & Crane, E. (2019). The Chalk Aquifer of the Wessex Basin. Research Report RR/11/02. British Geological Survey. Retrieved from <https://nora.nerc.ac.uk/id/eprint/522484/1/RR11002.pdf>
- Allen, D. J., Brewerton, L. J., Coleby, L. M., Gibbs, B. R., Lewis, M. A., MacDonald, A. M., et al. (1997). The physical properties of major aquifers in England and Wales. British Geological Survey. Retrieved from <https://nora.nerc.ac.uk/id/eprint/131371/1/WD97034.pdf>
- Alley, W. M., Healy, R. W., LaBaugh, J. W., & Reilly, T. E. (2002). Flow and storage in groundwater systems. *Science*, 296(5575), 1985–1990. <https://doi.org/10.1126/science.1067123>
- Alley, W. M., Reilly, T. E., & Franke, O. E. (1999). Sustainability of groundwater resources. *U.S. Geological Survey Circular 118*, 79. Retrieved from <https://pubs.usgs.gov/circ/circ1186/>
- Asoka, A., Asoka, A., Wada, Y., & Mishra, V. (2017). Relative contribution of monsoon precipitation and pumping to changes in groundwater storage in India. *Nature Geoscience*, 10(2), 109–117. <https://doi.org/10.1038/ngeo2869>
- Bhanja, S. N., Mukherjee, A., & Rodell, M. (2020). Groundwater storage change detection from in situ and GRACE-based estimates in major river basins across India. *Hydrological Sciences Journal*, 65(4), 650–659. <https://doi.org/10.1080/02626667.2020.1716238>
- Bierkens, M. F. P., Sutanudjaja, E. H., & Wanders, N. (2021). Large-scale sensitivities of groundwater and surface water to groundwater withdrawal. *Hydrology and Earth System Sciences*, 25(11), 5859–5878. <https://doi.org/10.5194/hess-25-5859-2021>
- Bierkens, M. F. P., & Wada, Y. (2019). Non-renewable groundwater use and groundwater depletion: A review. *Environmental Research Letters*, 14(6), 063002. <https://doi.org/10.1088/1748-9326/ab1a5f>
- Bredehoeft, J., & Durbin, T. (2009). Ground water development—The time to full capture problem. *Groundwater*, 47(4), 506–514. <https://doi.org/10.1111/j.1745-6584.2008.00538.x>
- Bredehoeft, J. D. (2002). The water budget myth revisited: Why hydrogeologists model. *Groundwater*, 40(4), 340–345. <https://doi.org/10.1111/j.1745-6584.2002.tb02511.x>
- Bredehoeft, J. D., Papadopoulos, S. S., & Cooper, H. H. (1982). The water budget myth. *Scientific Basis of Water Resource Management*, 51–57. Retrieved from <https://nap.nationalacademies.org/read/19530/chapter/7>
- Butler, J. J., Bohling, G. C., Perkins, S. P., Whittemore, D. O., Liu, G., & Wilson, B. B. (2023). Net inflow: An important target on the path to aquifer sustainability. *Groundwater*, 61(1), 56–65. <https://doi.org/10.1111/gwat.13233>

Acknowledgments

MOC gratefully acknowledges funding for an Independent Research Fellowship from the UK Natural Environment Research Council (NE/P017819/1). MFPB acknowledges funding by the European Research Council under the ERC AdG scheme (101019185 - GEOWAT). RGT acknowledges support of a CIFAR Fellowship (ref. FL-001275) in the Earth 4D: Subsurface Science and Exploration Program. GF acknowledges funding from a Natural Sciences and Engineering Research Council of Canada and the Global Water Futures program. Thank you to the 3 Reviewers, and the Associate Editor, whose input greatly improved the manuscript. Discussions and comments from Andrew McCallum, Martin Shepley and Adrian Healy, were also formative in improving the paper, but any mistakes are our own. This is Cardiff EARTH CRediT Contribution 17.

- Butler, J. J., Gomez-Hernandez, J. J., Perrone, D., & Hyndman, D. W. (2021). Introduction to special section: The quest for sustainability of heavily stressed aquifers at regional to global scales. *Water Resources Research*, 57(8), e2021WR030446. <https://doi.org/10.1029/2021WR030446>
- Butler, J. J., Whittlemore, D. O., Wilson, B. B., & Bohling, G. C. (2018). Sustainability of aquifers supporting irrigated agriculture: A case study of the high Plains aquifer in Kansas. *Water International*, 43(6), 815–828. <https://doi.org/10.1080/02508060.2018.1515566>
- Buxton, H. T., & Shernoff, P. K. (1995). *Ground-water resources of Kings and Queens Counties, long island, New York. USGS numbered series 92–76*. U.S. Geological Survey. <https://doi.org/10.3133/ofr9276>
- Currell, M. J. (2016). Drawdown “triggers”: A misguided strategy for protecting groundwater-fed streams and springs. *Groundwater*, 54(5), 619–622. <https://doi.org/10.1111/gwat.12425>
- Cuthbert, M. O., Gleeson, T., Befus, K. M., Schneider, A., Hartmann, J., & Lehner, B. (2019a). Global patterns and dynamics of climate-groundwater interactions. *Nature Climate Change*, 9(2), 137–141. <https://doi.org/10.1038/s41558-018-0386-4>
- Cuthbert, M. O., Taylor, R. G., Todd, M. C., Shamsudduha, M., Villholth, K. G., MacDonald, A. M., et al. (2019b). Observed controls on resilience of groundwater to climate variability in sub-Saharan Africa. *Nature*, 572(7768), 230–234. <https://doi.org/10.1038/s41586-019-1441-7>
- Darling, W. G., Edmunds, W., Kinniburgh, D. G., & Kotoub, S. (1987). *Sources of recharge to the basal Nubian sandstone aquifer, Butana region, Sudan, IAEA-SM-299/117*, 20.
- Devlin, J. F., & Sophocleous, M. (2005). The persistence of the water budget myth and its relationship to sustainability. *Hydrogeology Journal*, 13(4), 549–554. <https://doi.org/10.1007/s10040-004-0354-0>
- Devlin, J. F., & Sophocleous, M. (2006). Reply to Comment on “The persistence of the water budget myth and its relationship to sustainability” by J.F. Devlin and M. Sophocleous, *Hydrogeology Journal* (2005), 13:549–554. *Hydrogeology Journal*, 14(7), 1386. <https://doi.org/10.1007/s10040-006-0033-4>
- Divine, D., Eversoll, D., & Howard, L. (2018). The groundwater atlas of Red Willow County, Nebraska.
- Döll, P., & Fiedler, K. (2008). Global-scale modeling of groundwater recharge. *Hydrology and Earth System Sciences*, 12(3), 863–885. <https://doi.org/10.5194/hess-12-863-2008>
- Erskine, A. D., & Papaioannou, A. (1997). The use of aquifer response rate in the assessment of groundwater resources. *Journal of Hydrology*, 202(1), 373–391. [https://doi.org/10.1016/S0022-1694\(97\)00058-9](https://doi.org/10.1016/S0022-1694(97)00058-9)
- Famiglietti, J. S. (2014). The global groundwater crisis. *Nature Climate Change*, 4(11), 945–948. <https://doi.org/10.1038/nclimate2425>
- Favreau, G., Massuel, S., Leblanc, M., Boucher, M., Boulain, N., & Leduc, C. (2009). Land clearing, climate variability, and water resources increase in semiarid southwest Niger: A review. *Water Resources Research*, 45(7). <https://doi.org/10.1029/2007WR006785>
- Ferguson, G., Cuthbert, M. O., Befus, K., Gleeson, T., & McIntosh, J. C. (2020). Rethinking groundwater age. *Nature Geoscience*, 13(9), 592–594. <https://doi.org/10.1038/s41561-020-0629-7>
- Ferguson, G., McIntosh, J. C., Perrone, D., & Jasechko, S. (2018). Competition for shrinking window of low salinity groundwater. *Environmental Research Letters*, 13(11), 114013. <https://doi.org/10.1088/1748-9326/aa66d8>
- Ferré, T. P. A. (2017). Revisiting the relationship between data, models, and decision-making. *Groundwater*, 55(5), 604–614. <https://doi.org/10.1111/gwat.12574>
- Fishman, R. M., Siegfried, T., Raj, P., Modi, V., & Lall, U. (2011). Over-extraction from shallow bedrock versus deep alluvial aquifers: Reliability versus sustainability considerations for India’s groundwater irrigation. *Water Resources Research*, 47(6). <https://doi.org/10.1029/2011wr010617>
- Food and Agriculture Organization of the United Nations. (2003). *Review of world water resources by country*. Food and Agriculture Organization of the United Nations. Water Reports 23.
- Foster, S., & MacDonald, A. (2014). The “water security” dialogue: Why it needs to be better informed about groundwater. *Hydrogeology Journal*, 22(7), 1489–1492. <https://doi.org/10.1007/s10040-014-1157-6>
- Galloway, D. L., & Burbey, T. J. (2011). Regional land subsidence accompanying groundwater extraction. *Hydrogeology Journal*, 19(8), 1459–1486. <https://doi.org/10.1007/s10040-011-0775-5>
- Gleeson, T., Cuthbert, M., Ferguson, G., & Perrone, D. (2020). Global groundwater sustainability, resources, and systems in the anthropocene. *Annual Review of Earth and Planetary Sciences*, 48(1), 431–463. <https://doi.org/10.1146/annurev-earth-071719-055251>
- Goderniaux, P., Orban, P., Rorive, A., Brouyère, S., & Dassargues, A. (2021). *Study of historical groundwater level changes in two Belgian chalk aquifers in the context of climate change impacts*. Geological Society, London, Special Publications. Vol. 517, SP517-2020–212. <https://doi.org/10.1144/SP517-2020-212>
- Healy, R. W. (2010). *Estimating groundwater recharge*. Cambridge University Press.
- Heinl, M., & Brinkmann, P. J. (1989). A groundwater model of the Nubian aquifer system. *Hydrological Sciences Journal*, 34(4), 425–447. <https://doi.org/10.1080/02626668909491350>
- Hora, T., Srinivasan, V., & Basu, N. B. (2019). The groundwater recovery paradox in South India. *Geophysical Research Letters*, 46(16), 9602–9611. <https://doi.org/10.1029/2019gl083525>
- Hudson, M. (2002). Groundwater sustainability and water resources planning for the East Midlands resource zone. *Geological Society, London, Special Publications*, 193(1), 91–98. <https://doi.org/10.1144/GSL.SP.2002.193.01.08>
- Jackson, C. R., Bloomfield, J. P., & Mackay, J. D. (2015). Evidence for changes in historic and future groundwater levels in the UK. *Progress in Physical Geography: Earth and Environment*, 39(1), 49–67. <https://doi.org/10.1177/0309133314550668>
- Jasechko, S., & Perrone, D. (2021). Global groundwater wells at risk of running dry. *Science*, 372(6540), 418–421. <https://doi.org/10.1126/science.abc2755>
- Kalf, F. R. P., & Woolley, D. R. (2005). Applicability and methodology of determining sustainable yield in groundwater systems. *Hydrogeology Journal*, 13(1), 295–312. <https://doi.org/10.1007/s10040-004-0401-x>
- Konikow, L. F., & Leake, S. A. (2014). Depletion and capture: Revisiting “the source of water derived from wells”. *Groundwater*, 52(S1), 100–111. <https://doi.org/10.1111/gwat.12204>
- Kotchoni, D. O. V., Vouillamoz, J.-M., Lawson, F. M. A., Adjomayi, P., Boukari, M., & Taylor, R. G. (2019). Relationships between rainfall and groundwater recharge in seasonally humid Benin: A comparative analysis of long-term hydrographs in sedimentary and crystalline aquifers. *Hydrogeology Journal*, 27(2), 447–457. <https://doi.org/10.1007/s10040-018-1806-2>
- Kraijenhoff van de Leur, D. A. (1958). A study of non-steady groundwater flow with special reference to a reservoir-coefficient. *B. BOUW- EN WATERBOUWKUNDE*, 9, 8.
- Lachassagne, P., Dewandel, B., & Wyns, R. (2021). Review: Hydrogeology of weathered crystalline/hard-rock aquifers—Guidelines for the operational survey and management of their groundwater resources. *Hydrogeology Journal*, 29(8), 2561–2594. <https://doi.org/10.1007/s10040-021-02339-7>
- Lejars, C., Fusillier, J. L., Bouarfa, S., Coutant, C., Brunel, L., Rucheton, G., et al. (2012). Limitation of agricultural groundwater uses in Beauce (France): What are the impacts on farms and on the food-processing sector? *Irrigation and Drainage*, 61(S1), 54–64. <https://doi.org/10.1002/ird.1659>

- Lerner, D. N., & Barrett, M. H. (1996). Urban groundwater issues in the United Kingdom. *Hydrogeology Journal*, 4(1), 80–89. <https://doi.org/10.1007/s100400050096>
- Li, Q., Gleeson, T., Zipper, S. C., & Kerr, B. (2022). Too many streams and not enough time or money? Analytical depletion functions for stream-flow depletion estimates. *Groundwater*, 60(1), 145–155. <https://doi.org/10.1111/gwat.13124>
- Lloyd, J. W., & Farag, M. H. (1978). Fossil ground-water gradients in arid regional sedimentary basins. *Groundwater*, 16(6), 388–392. <https://doi.org/10.1111/j.1745-6584.1978.tb03251.x>
- Loáiciga, H. A. (2006). Comment on “The persistence of the water budget myth and its relationship to sustainability” by J.F. Devlin and M. Sophocleous. *Hydrogeology Journal* (2005) 13:549–554. *Hydrogeology Journal*, 14(7), 1383–1385. <https://doi.org/10.1007/s10040-006-0032-5>
- Loáiciga, H. A. (2017). The safe yield and climatic variability: Implications for groundwater management. *Groundwater*, 55(3), 334–345. <https://doi.org/10.1111/gwat.12481>
- Lohman, S. W. (1972). Definitions of selected ground-water terms, revisions and conceptual refinements. *Report 1988*. Washington, D.C., 1–21. <https://doi.org/10.3133/wsp1988>
- MacDonald, A. M., & Allen, D. J. (2001). Aquifer properties of the chalk of England. *The Quarterly Journal of Engineering Geology and Hydrogeology*, 34(4), 371–384. <https://doi.org/10.1144/qjegh.34.4.371>
- Mace, R. E. (2022). *Groundwater sustainability. Palgrave studies in environmental sustainability*. Palgrave Macmillan. Retrieved from <https://link.springer.com/book/10.1007/978-3-031-13516-3>
- Maréchal, J. C., & Rouillard, J. (2020). Groundwater in France: Resources, use and management issues. In: Rinaudo, J.D., Holley, C., Barnett, S., Montginoul, M. (eds) sustainable groundwater management. Global issues in water policy, vol 24, 17, 45. Springer. https://doi.org/10.1007/978-3-030-32766-8_2
- Margat, J., Foster, S., & Droubi, A. (2006). Concept and importance of non-renewable resources. *Non-renewable groundwater resources: A guidebook on socially-sustainable management for water-policy makers*, 10, 13–24.
- Morgan, L. K., Werner, A. D., & Simmons, C. T. (2012). On the interpretation of coastal aquifer water level trends and water balances: A precautionary note. *Journal of Hydrology*, 470, 280–288. <https://doi.org/10.1016/j.jhydrol.2012.09.001>
- Morris, K. (2021). *Shropshire middle severn abstraction licensing strategy*. Environment Agency. Retrieved from https://assets.publishing.service.gov.uk/government/uploads/system/uploads/attachment_data/file/1001906/CAMS-Shropshire-Middle-Severn-Abstraction-Licensing-Strategy.pdf
- Ojha, C., Werth, S., & Shirzaei, M. (2019). Groundwater loss and aquifer system compaction in San Joaquin Valley during 2012–2015 drought. *Journal of Geophysical Research: Solid Earth*, 124(3), 3127–3143. <https://doi.org/10.1029/2018jb016083>
- Owor, M., Owor, M., Tindimugaya, C., & Mwesigwa, D. (2009). Rainfall intensity and groundwater recharge: Empirical evidence from the upper Nile basin. *Environmental Research Letters*, 4(3), 035009. <https://doi.org/10.1088/1748-9326/4/3/035009>
- Park, C., & Allaby, M. (2017). *A dictionary of environment and conservation*. Oxford University Press. <https://doi.org/10.1093/acref/9780191826320.001.0001>
- Pauloo, R. A., Guo, Z., & Harter, T. (2021). Anthropogenic basin closure and groundwater salinization (ABCSAL). *Journal of Hydrology*, 593, 125787. <https://doi.org/10.1016/j.jhydrol.2020.125787>
- Peterson, T. J., Saft, M., Peel, M. C., & John, A. (2021). Watersheds may not recover from drought. *Science*, 372(6543), 745–749. <https://doi.org/10.1126/science.abd5085>
- Quichimbo, E. A., Singer, M. B., & Cuthbert, M. O. (2020). Characterising groundwater–surface water interactions in idealised ephemeral stream systems. *Hydrological Processes*, 34(18), 3792–3806. <https://doi.org/10.1002/hyp.13847>
- Rau, G. C., Cuthbert, M. O., Post, V. E., Schweizer, D., Acworth, R. I., Andersen, M. S., et al. (2020). Future-proofing hydrogeology by revising groundwater monitoring practice. *Hydrogeology Journal*, 28(8), 2963–2969. <https://doi.org/10.1007/s10040-020-02242-7>
- Render, F. W. (1970). Geohydrology of the metropolitan Winnipeg area as related to groundwater supply and construction. *Canadian Geotechnical Journal*, 7(3), 243–274. <https://doi.org/10.1139/t70-033>
- Rousseau-Gueutin, P., Love, A. J., Vasseur, G., Robinson, N. I., Simmons, C. T., De Marsily, G., et al. (2013). Time to reach near-steady state in large aquifers. *Water Resources Research*, 49(10), 6893–6908. <https://doi.org/10.1002/wrcr.20534>
- Rudestam, K., & Langridge, R. (2014). Sustainable yield in theory and practice: Bridging scientific and mainstream vernacular. *Groundwater*, 52(S1), 90–99. <https://doi.org/10.1111/gwat.12160>
- Rushton, K. R. (2004). *Groundwater hydrology: Conceptual and computational models*. John Wiley & Sons.
- Rushton, K. R., & Skinner, A. C. (2012). A national approach to groundwater modelling: Developing a programme and establishing technical standards. *Geological Society, London, Special Publications*, 364(1), 7–17. <https://doi.org/10.1144/SP364.2>
- Salem, Z. (2016). Subsurface thermal regime to delineate the paleo-groundwater flow system in an arid area, Al Kufra, Libya. *NRIAG Journal of Astronomy and Geophysics*, 5(2), 451–462. <https://doi.org/10.1016/j.nrjag.2016.10.002>
- Scanlon, B. R., Longuevergne, L., Reedy, R. C., Alley, W. M., McGuire, V. L., & McMahon, P. B. (2012). Groundwater depletion and sustainability of irrigation in the US high Plains and Central Valley. *Proceedings of the National Academy of Sciences*, 109(24), 9320–9325. <https://doi.org/10.1073/pnas.120031109>
- Shepley, M., Sahuquillo, A., Capilla, J., Martínez-Cortina, L., & Sanchez-Vila, X. (2005). Predicting impacts of abstraction reduction for an aquifer with a century of exploitation. *Groundwater Intensive Use. International Association of Hydrogeologists Selected Papers*, 7, 269–276. <https://doi.org/10.1201/9781439833629.ch21>
- Shepley, M. G., & Streetly, M. (2007). The estimation of ‘natural’ summer outflows from the Permo-Triassic Sandstone aquifer, UK. *The Quarterly Journal of Engineering Geology and Hydrogeology*, 40(3), 213–227. <https://doi.org/10.1144/1470-9236/06-038>
- Simpson, M. J., Jazaei, F., & Clement, T. P. (2013). How long does it take for aquifer recharge or aquifer discharge processes to reach steady state? *Journal of Hydrology*, 501, 241–248. <https://doi.org/10.1016/j.jhydrol.2013.08.005>
- Soley, R. W. N. (2023). Enormous cuts to groundwater abstraction in England are unwise. *The Environment, CIWEM*, February 2023.
- Sultan, M., Metwally, S., Milewski, A., Becker, D., Ahmed, M., Sauck, W., et al. (2011). Modern recharge to fossil aquifers: Geochemical, geophysical, and modeling constraints. *Journal of Hydrology*, 403(1), 14–24. <https://doi.org/10.1016/j.jhydrol.2011.03.036>
- Taylor, R. (2009). Rethinking water scarcity: The role of storage. *Eos, Transactions American Geophysical Union*, 90(28), 237–238. <https://doi.org/10.1029/2009EO280001>
- Taylor, R., & Howard, K. (2000). A tectono-geomorphic model of the hydrogeology of deeply weathered crystalline rock: Evidence from Uganda. *Hydrogeology Journal*, 8(3), 279–294. <https://doi.org/10.1007/s100400000069>
- Theis, C. V. (1940). The source of water derived from wells. *Civil Engineering*, 10(5), 277–280.
- Thomann, J. A., Werner, A. D., Irvine, D. J., & Currell, M. J. (2020). Adaptive management in groundwater planning and development: A review of theory and applications. *Journal of Hydrology*, 586, 124871. <https://doi.org/10.1016/j.jhydrol.2020.124871>

- Townley, L. R. (1995). The response of aquifers to periodic forcing. *Advances in Water Resources*, 18(3), 125–146. [https://doi.org/10.1016/0309-1708\(95\)00008-7](https://doi.org/10.1016/0309-1708(95)00008-7)
- Vörösmarty, C. J., Salisbury, J., & Lammers, R. B. (2000). Global water resources: Vulnerability from climate change and population growth. *Science*, 289(5477), 284–288. <https://doi.org/10.1126/science.289.5477.284>
- Voss, C. I., & Soliman, S. M. (2014). The transboundary non-renewable Nubian aquifer system of Chad, Egypt, Libya and Sudan: Classical groundwater questions and parsimonious hydrogeologic analysis and modeling. *Hydrogeology Journal*, 22(2), 441–468. <https://doi.org/10.1007/s10040-013-1039-3>
- Wada, Y., Van Kempen, C. M., Reckman, J. W. T. M., Vasak, S., & Bierkens, M. F. P. (2010). Global depletion of groundwater resources. *Geophysical Research Letters*, 37(20), a–n. <https://doi.org/10.1029/2010GL044571>
- Werner, A. D., Alcoe, D. W., Ordens, C. M., Hutson, J. L., Ward, J. D., & Simmons, C. T. (2011). Current practice and future challenges in coastal aquifer management: Flux-based and trigger-level approaches with application to an Australian case study. *Water Resources Management*, 25(7), 1831–1853. <https://doi.org/10.1007/s11269-011-9777-2>
- Werner, A. D., Bakker, M., Post, V. E. A., Vandenbohede, A., Lu, C., Ataie-Ashtiani, B., et al. (2013). Seawater intrusion processes, investigation and management: Recent advances and future challenges. *Advances in Water Resources*, 51, 3–26. <https://doi.org/10.1016/j.advwatres.2012.03.004>
- Wood, W. W. (2001). Water sustainability--science or management? *Ground Water*, 39(5), 641. <https://doi.org/10.1111/j.1745-6584.2001.tb02352.x>
- Zhou, Y. (2009). A critical review of groundwater budget myth, safe yield and sustainability. *Journal of Hydrology*, 370(1), 207–213. <https://doi.org/10.1016/j.jhydrol.2009.03.009>
- Zipper, S., Popescu, I., Compare, K., Zhang, C., & Seybold, E. C. (2022). Alternative stable states and hydrological regime shifts in a large intermittent river. *Environmental Research Letters*, 17(7), 074005. <https://doi.org/10.1088/1748-9326/ac7539>